

SNCB Polyclonal Antibody

catalog number: E-AB-53597

Note: Centrifuge before opening to ensure complete recovery of vial contents.

Description

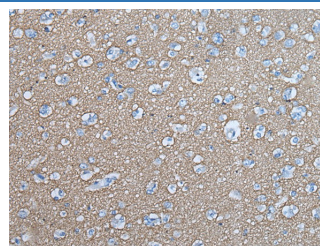
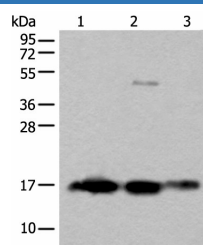
Reactivity	Human;Mouse;Rat
Immunogen	Synthetic peptide of human SNCB
Host	Rabbit
Isotype	IgG
Purification	Antigen affinity purification
Conjugation	Unconjugated
buffer	Phosphate buffered solution, pH 7.4, containing 0.05% stabilizer and 50% glycerol.

Applications

Recommended Dilution

WB	1:500-1:2000
IHC	1:30-1:150

Data



Western blot analysis of Rat brain tissue Human cerebrum tissue Human cerebella tissue lysates using SNCB Polyclonal Antibody at dilution of 1:450

Immunohistochemistry of paraffin-embedded Human brain tissue using SNCB Polyclonal Antibody at dilution of 1:45(×200)

Observed-MV:Refer to figures

Calculated-MV:14 kDa

Preparation & Storage

Storage	Store at -20°C Valid for 12 months. Avoid freeze / thaw cycles.
Shipping	The product is shipped with ice pack,upon receipt,store it immediately at the temperature recommended.

Background

This gene encodes a member of a small family of proteins that inhibit phospholipase D2 and may function in neuronal plasticity. The encoded protein is abundant in lesions of patients with Alzheimer disease. A mutation in this gene was found in individuals with dementia with Lewy bodies. Alternative splicing results in multiple transcript variants.

For Research Use Only