

## SOD1 Polyclonal Antibody

catalog number: **E-AB-40047**

**Note:** Centrifuge before opening to ensure complete recovery of vial contents.

### Description

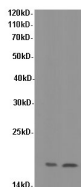
<b>Reactivity</b>	Human
<b>Immunogen</b>	Recombinant Human Superoxide dismutase protein
<b>Host</b>	Rabbit
<b>Isotype</b>	IgG
<b>Purification</b>	Antigen Affinity Purification
<b>Buffer</b>	PBS with 0.05% Proclin300, 1% protective protein and 50% glycerol, pH7.4

### Applications

### Recommended Dilution

<b>WB</b>	1:500-1:1000
-----------	--------------

### Data



Western Blot analysis of HeLa and K562 cells using SOD1

Polyclonal Antibody at dilution of 1:600

**Observed-MW:17 kDa**

**Calculated-MW:17 kDa**

### Preparation & Storage

<b>Storage</b>	Store at -20°C Valid for 12 months. Avoid freeze / thaw cycles.
<b>Shipping</b>	The product is shipped with ice pack, upon receipt, store it immediately at the temperature recommended.

### Background

Destroys radicals which are normally produced within the cells and which are toxic to biological systems.

### For Research Use Only