

## Purified Anti-Human CD66b Antibody[G10F5]

**catalog number: E-AB-F1267A**

**Note:** Centrifuge before opening to ensure complete recovery of vial contents.

### Description

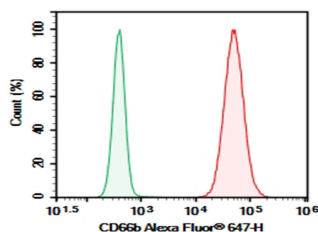
<b>Reactivity</b>	Human
<b>Immunogen</b>	Recombinant Human CD66b protein
<b>Host</b>	Mouse
<b>Isotype</b>	Mouse IgM, $\kappa$
<b>Clone</b>	G10F5
<b>Purification</b>	>98%, Protein A/G purified
<b>Buffer</b>	Phosphate-buffered solution, pH 7.2, containing 0.05% non-protein stabilizer. Dialyze to completely remove the stabilizer prior to labeling.

### Applications

### Recommended Dilution

<b>FCM</b>	2 $\mu\text{g/mL}$ ( $1 \times 10^5$ - $5 \times 10^5$ cells)
------------	---

### Data



Human peripheral blood granulocytes cell were stained with 0.2  $\mu\text{g}$  Purified Anti-Human CD66b Antibody[G10F5] (Right) and 0.2  $\mu\text{g}$  Mouse IgM,  $\kappa$  Isotype Control (Left), followed by Alexa Fluor® 647-conjugated Goat Anti-Mouse IgM Secondary Antibody

### Preparation & Storage

<b>Storage</b>	Store at 4°C valid for 12 months or -20°C valid for long term storage, avoid freeze / thaw cycles.
<b>Shipping</b>	Ice bag

### Background

Carcinoembryonic Antigen-Related Cell Adhesion Molecule 8 (CEACAM8) is a single chain, GPI-anchored, highly glycosylated protein which belongs to the immunoglobulin superfamily and the carcinoembryonic antigen(CEA) family. CEACAM8 is expressed by neutrophils and eosinophils, and serves as a binding partner for CEACAM-6 and Galectin-3. It contains two Ig-like C2-type (immunoglobulin-like) domains and one Ig-like V-type (immunoglobulin-like) domain. Mature human CEACAM8 is a 287 amino acid GPI-linked glycoprotein. CEACAM family members are a set of widely expressed proteins involved in several biological functions, including cell adhesion, migration, signal transduction, and the regulation of gene expression. Abnormal overexpression and downregulation of some CEACAMs have been described in tumor cells.

### For Research Use Only