

SAA3 Polyclonal Antibody

Catalog Number: E-AB-90313

Note: Centrifuge before opening to ensure complete recovery of vial contents.

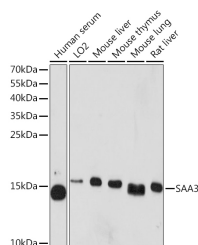
Description

Reactivity	Human, Mouse, Rat
Immunogen	A synthetic peptide of mouse SAA3P
Host	Rabbit
Isotype	IgG
Purification	Affinity purification
Conjugation	Unconjugated
Formulation	PBS with 0.02% sodium azide, 50% glycerol, pH 7.3.

Applications Recommended Dilution

WB	1:500-1:2000
-----------	--------------

Data



Western blot analysis of extracts of various cell lines using SAA3 Polyclonal Antibody at 1:1000 dilution.

Observed Mw: 14kDa
Calculated Mw: 13kDa

Preparation & Storage

Storage Store at -20°C. Avoid freeze/thaw cycles.

Background

Enables Toll-like receptor 4 binding activity and chemoattractant activity. Acts upstream of or within several processes, including I-kappaB phosphorylation; cellular response to interleukin-1; and response to stilbenoid. Located in extracellular space. Is expressed in cerebellum; ileum; liver; reproductive system; and thymus. Orthologous to several human genes including SAA2 (serum amyloid A2).

For Research Use Only

A Reliable Research Partner in Life Science and Medicine

Toll-free: 1-888-852-8623

Web: www.elabscience.com

Tel: 1-832-243-6086

Email: techsupport@elabscience.com

Fax: 1-832-243-6017