

## RTBDN Polyclonal Antibody

**catalog number: E-AB-65349**

**Note:** Centrifuge before opening to ensure complete recovery of vial contents.

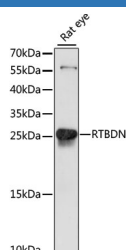
### Description

<b>Reactivity</b>	Rat
<b>Immunogen</b>	Recombinant fusion protein of human RTBDN (NP_113617.1).
<b>Host</b>	Rabbit
<b>Isotype</b>	IgG
<b>Purification</b>	Affinity purification
<b>Buffer</b>	Phosphate buffered solution, pH 7.4, containing 0.05% stabilizer and 50% glycerol.

### Applications

<b>WB</b>	1:200-1:2000
-----------	--------------

### Data



Western blot analysis of extracts of Rat eye using RTBDN  
Polyclonal Antibody at dilution of 1:1000.

**Observed-MW:25 kDa**

**Calculated-MW:24 kDa/25 kDa/28 kDa**

### Preparation & Storage

<b>Storage</b>	Store at -20°C Valid for 12 months. Avoid freeze / thaw cycles.
<b>Shipping</b>	The product is shipped with ice pack, upon receipt, store it immediately at the temperature recommended.

### Background

This gene was first identified in a study of human eye tissues. The protein encoded by this gene is preferentially expressed in the retina and may play a role in binding retinoids and other carotenoids as it shares homology with riboflavin binding proteins. Alternative splicing results in multiple transcript variants and protein isoforms.

### For Research Use Only