

Recombinant Human LAT2 Protein (His Tag)

Catalog Number: PKSH032707

Note: Centrifuge before opening to ensure complete recovery of vial contents.

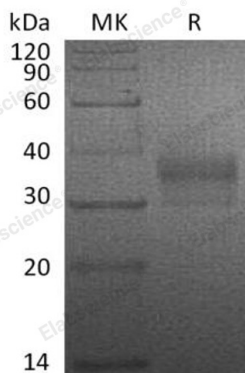
Description

Species	Human
Source	HEK293 Cells-derived Human LAT2 protein Arg27-Ala243, with an C-terminal His
Calculated MW	25.0 kDa
Observed MW	35-40 kDa
Accession	Q9GZY6
Bio-activity	Not validated for activity

Properties

Purity	> 95 % as determined by reducing SDS-PAGE.
Endotoxin	< 1.0 EU per µg of the protein as determined by the LAL method.
Storage	Generally, lyophilized proteins are stable for up to 12 months when stored at -20 to -80 °C. Reconstituted protein solution can be stored at 4-8°C for 2-7 days. Aliquots of reconstituted samples are stable at < -20°C for 3 months.
Shipping	This product is provided as lyophilized powder which is shipped with ice packs.
Formulation	Lyophilized from a 0.2 µm filtered solution of 20mM PB, 150mM NaCl, pH7.4. Normally 5% - 8% trehalose, mannitol and 0.01% Tween 80 are added as protectants before lyophilization.
	Please refer to the specific buffer information in the printed manual.
Reconstitution	Please refer to the printed manual for detailed information.

Data



> 95 % as determined by reducing SDS-PAGE.

Background

Linker for Activation of T-Cells Family Member 2 (LAT2) is a single-pass type III membrane protein. LAT2 is highly expressed in the spleen, peripheral blood lymphocytes, and germinal centers of lymph nodes. LAT2 is involved in FCER1 (high affinity immunoglobulin epsilon receptor)-mediated signaling in mast cells. It may also be involved in BCR (B-cell antigen receptor)-mediated signaling in B-cells and FCGR1 (high affinity immunoglobulin gamma Fc receptor I)-mediated signaling in myeloid cells. Coupling activate of these receptors and their associated kinases with distal intracellular events through the recruitment of GRB2.

For Research Use Only

Toll-free: 1-888-852-8623
Web: www.elabscience.com

Tel: 1-832-243-6086
Email: techsupport@elabscience.com

Fax: 1-832-243-6017