

Cyclin E1 Polyclonal Antibody

catalog number: E-AB-31074

Note: Centrifuge before opening to ensure complete recovery of vial contents.

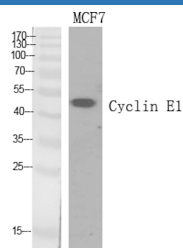
Description

Reactivity	Human;Mouse;Rat
Immunogen	Synthesized peptide derived from the Internal region of human Cyclin E1
Host	Rabbit
Isotype	IgG
Purification	Affinity purification
Conjugation	Unconjugated
buffer	Phosphate buffered solution, pH 7.4, containing 0.05% stabilizer, 0.5% protein protectant and 50% glycerol.

Applications

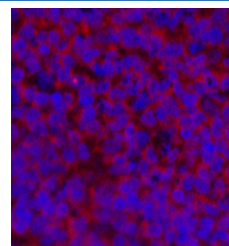
Applications	Recommended Dilution
WB	1:500-1:2000
IHC	1:100-1:300
IF	1:200-1:1000

Data



Western Blot analysis of MCF7 cells using Cyclin E1 Polyclonal Antibody at dilution of 1:500.

Observed-MV:49 kDa
Calculated-MV:47 kDa



Immunofluorescence analysis of Rat spleen tissue using Cyclin E1 Polyclonal Antibody at dilution of 1:200.

Preparation & Storage

Storage	Store at -20°C Valid for 12 months. Avoid freeze / thaw cycles.
Shipping	The product is shipped with ice pack, upon receipt, store it immediately at the temperature recommended.

Background

Essential for the control of the cell cycle at the G1/S (start) transition.

For Research Use Only