

## Recombinant Human RIDA/HRSP12 Protein (His Tag)

**Catalog Number:** PKSH032526

**Note:** Centrifuge before opening to ensure complete recovery of vial contents.

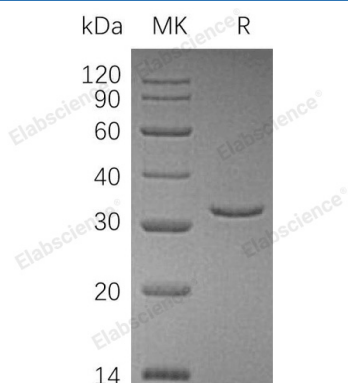
### Description

<b>Species</b>	Human
<b>Source</b>	E.coli-derived Human RIDA;HRSP12 protein Met 1-Leu137, with an N-terminal His
<b>Calculated MW</b>	16.7 kDa
<b>Observed MW</b>	16 kDa
<b>Accession</b>	P52758
<b>Bio-activity</b>	Not validated for activity

### Properties

<b>Purity</b>	> 95 % as determined by reducing SDS-PAGE.
<b>Concentration</b>	Subject to label value.
<b>Endotoxin</b>	< 1.0 EU per µg of the protein as determined by the LAL method.
<b>Storage</b>	Store at < -20°C, stable for 6 months. Please minimize freeze-thaw cycles.
<b>Shipping</b>	This product is provided as liquid. It is shipped at frozen temperature with blue ice/gel packs. Upon receipt, store it immediately at < -20°C.
<b>Formulation</b>	Supplied as a 0.2 µm filtered solution of 20mM Tris-HCl, 100mM NaCl, 1mM DTT, 10% Glycerol, pH 8.0.

### Data



> 95 % as determined by reducing SDS-PAGE.

### Background

Heat-Responsive Protein 12 (HRSP12) is an endoribonuclease that belongs to the Rut family. HRSP12 is found mainly in the human adult kidney and liver and is responsible for inhibiting protein translation by cleaving mRNA. HRSP12 only cleaves phosphodiester bonds in single-stranded RNA and inhibits cell-free protein synthesis. The levels of both mRNA and protein are markedly reduced in hepatocellular tumors and in human hepatoma cell lines compared with normal liver tissues. Moreover the levels of HRSP12 are different depending on the grade of the tumor. This had led to the suggestion that HRSP12 may be an important biomarker for hepatic carcinoma.

### For Research Use Only

Toll-free: 1-888-852-8623  
Web: [www.elabscience.com](http://www.elabscience.com)

Tel: 1-832-243-6086  
Email: [techsupport@elabscience.com](mailto:techsupport@elabscience.com)

Fax: 1-832-243-6017