

## XPNPEP1 Polyclonal Antibody

catalog number: E-AB-53209

**Note:** Centrifuge before opening to ensure complete recovery of vial contents.

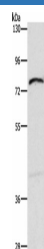
### Description

Reactivity	Human;Mouse
Immunogen	Synthetic peptide of human XPNPEP1
Host	Rabbit
Isotype	IgG
Purification	Antigen affinity purification
Buffer	Phosphate buffered solution, pH 7.4, containing 0.05% stabilizer and 50% glycerol.

### Applications Recommended Dilution

WB	1:500-1:2000
----	--------------

### Data



Western blot analysis of Mouse intestinum tenue tissue using  
XPNPEP1 Polyclonal Antibody at dilution of 1:600

**Observed-MV:Refer to figures**

**Calculated-MV:70 kDa**

### Preparation & Storage

Storage	Store at -20°C Valid for 12 months. Avoid freeze / thaw cycles.
Shipping	The product is shipped with ice pack,upon receipt,store it immediately at the temperature recommended.

### Background

This gene encodes the cytosolic form of a metalloaminopeptidase that catalyzes the cleavage of the N-terminal amino acid adjacent to a proline residue. The gene product may play a role in degradation and maturation of tachykinins, neuropeptides, and peptide hormones. Alternative splicing results in multiple transcript variants.

### For Research Use Only