

# RAB3C Polyclonal Antibody

catalog number: E-AB-15487

**Note:** Centrifuge before opening to ensure complete recovery of vial contents.

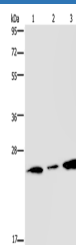
## Description

<b>Reactivity</b>	Human;Mouse;Rat
<b>Immunogen</b>	Synthetic peptide of human RAB3c
<b>Host</b>	Rabbit
<b>Isotype</b>	IgG
<b>Purification</b>	Affinity purification
<b>Conjugation</b>	Unconjugated
<b>buffer</b>	Phosphate buffered solution, pH 7.4, containing 0.05% stabilizer and 50% glycerol.

## Applications

<b>WB</b>	1:500-1:2000
-----------	--------------

## Data



Western Blot analysis of Human fetal brain tissue and 293T cell using RAB3c Polyclonal Antibody at dilution of 1:400

**Calculated-MV:26 kDa**

## Preparation & Storage

<b>Storage</b>	Store at -20°C Valid for 12 months. Avoid freeze / thaw cycles.
<b>Shipping</b>	The product is shipped with ice pack,upon receipt,store it immediately at the temperature recommended.

## Background

Ras-related protein Rab-3C is a protein that in humans is encoded by the RAB3C gene. RAB proteins, such as RAB3C, are small GTPases implicated in the regulation of vesicular trafficking between membrane compartments. It involved in rotein transport and vesicular traffic probably.

## For Research Use Only