

Catenin beta Monoclonal Antibody

catalog number: E-AB-70230

Note: Centrifuge before opening to ensure complete recovery of vial contents.

Description

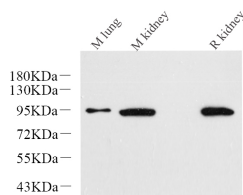
Reactivity	Human;Mouse;Rat
Immunogen	Recombinant protein corresponding to Mouse β -catenin
Host	Mouse
Isotype	IgG
Clone	4A3H3
Purification	Affinity purification
Conjugation	Unconjugated
Buffer	Phosphate buffered solution, pH 7.4, containing 0.05% stabilizer, 1% protein protectant and 50% glycerol.

Applications

Recommended Dilution

WB	1:500-1:1000
IHC	1:100-1:500

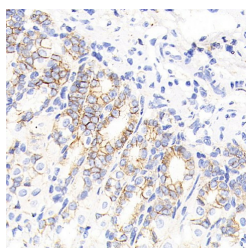
Data



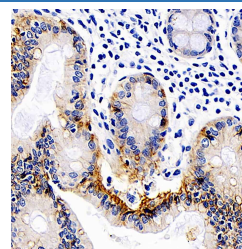
Western Blot analysis of various samples using Catenin beta Monoclonal Antibody at dilution of 1:1000.

Observed-MW:92 kDa

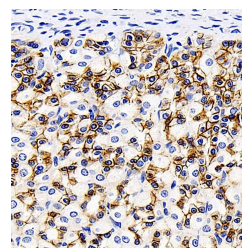
Calculated-MW:92 kDa



Immunohistochemistry analysis of paraffin-embedded mouse stomach using Catenin beta Monoclonal Antibody at dilution of 1:200.



Immunohistochemistry analysis of paraffin-embedded Human colon using Catenin beta Monoclonal Antibody at dilution of 1:200.



Immunohistochemistry analysis of paraffin-embedded Rat stomach using Catenin beta Monoclonal Antibody at dilution of 1:200.

Preparation & Storage

Storage	Store at -20°C Valid for 12 months. Avoid freeze / thaw cycles.
Shipping	The product is shipped with ice pack, upon receipt, store it immediately at the temperature recommended.

Background

For Research Use Only

CTNNB1, also known as β -Catenin, is an evolutionarily conserved, multifunctional intracellular protein. CTNNB1 was originally identified in cell adherens junctions (AJs) where it functions to bridge the cytoplasmic domain of cadherins to α -catenin and the actin cytoskeleton. Besides its essential role in the AJs, CTNNB1 is also a key downstream component of the canonical Wnt pathway that plays diverse and critical roles in embryonic development and adult tissue homeostasis. Deregulation of CTNNB1 activity is associated with multiple diseases including cancers. .