

p70 S6 kinase alpha Monoclonal Antibody

Catalog Number: E-AB-22198



Note: Centrifuge before opening to ensure complete recovery of vial contents.

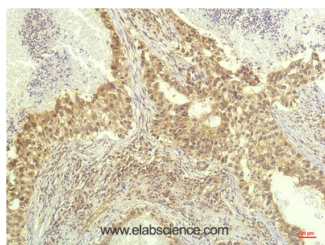
Description

| | |
|---------------------|--|
| Reactivity | Human, Mouse, Rat |
| Immunogen | Recombinant Protein of P70 S6 Kinase of RPS6KB1 |
| Host | Mouse |
| Isotype | IgG |
| Clone | Clone: 1C7 |
| Purification | Protein A purification |
| Formulation | PBS with 0.02% sodium azide, 0.5% protective protein and 50% glycerol, pH7.4 |

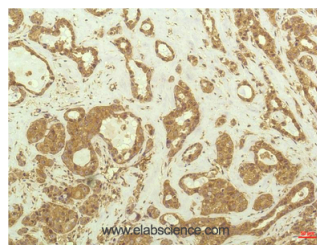
Applications Recommended Dilution

| | |
|------------|-----------|
| IHC | 1:100-200 |
|------------|-----------|

Data



Immunohistochemistry of paraffin-embedded Human lung carcinoma tissue using p70 S6 kinase alpha Monoclonal Antibody at dilution of 1:200.



Immunohistochemistry of paraffin-embedded Human breast carcinoma tissue using p70 S6 kinase alpha Monoclonal Antibody at dilution of 1:200.

Preparation & Storage

Storage Store at -20°C. Avoid freeze / thaw cycles.

Background

P70 S6 Kinase alpha is a member of the RSK (ribosomal S6 kinase) family of serine/threonine kinases and contains 2 non-identical kinase catalytic domains. It phosphorylates several residues of the S6 ribosomal protein. The kinase activity of this protein is activated by serine/threonine phosphorylation and protein kinase C and inactivated by type 2A phosphatase. Activation leads to an increase in protein synthesis and cell proliferation. Overexpression of this kinase is involved in some breast cancer cell lines. Alternate translational start sites have been described and alternate transcriptional splice variants have been observed but have not been thoroughly characterized.

For Research Use Only

A Reliable Research Partner in Life Science and Medicine

Toll-free: 1-888-852-8623

Web: www.elabscience.com

Tel: 1-832-243-6086

Email: techsupport@elabscience.com

Fax: 1-832-243-6017