

DNMT1 Polyclonal Antibody

Catalog Number: E-AB-70196

Note: Centrifuge before opening to ensure complete recovery of vial contents.

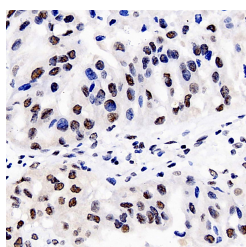
Description

Reactivity	Human
Immunogen	KLH conjugated Synthetic peptide corresponding to Mouse Dnmt1
Host	Rabbit
Isotype	IgG
Purification	Affinity purification
Conjugation	Unconjugated
Formulation	PBS with 0.02% sodium azide, 1% protective protein and 50% glycerol, pH7.4

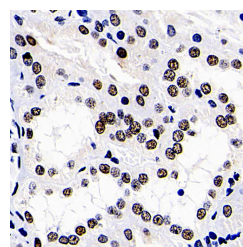
Applications Recommended Dilution

IHC	1:200-1:800
------------	-------------

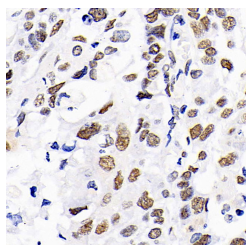
Data



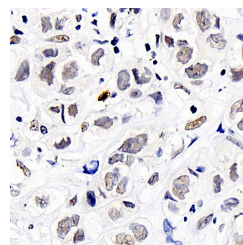
Immunohistochemistry analysis of paraffin-embedded human liver cancer using DNMT1 Polyclonal Antibody at dilution of 1:300.



Immunohistochemistry analysis of paraffin-embedded human kidney using DNMT1 Polyclonal Antibody at dilution of 1:300.



Immunohistochemistry analysis of paraffin-embedded human lung cancer using DNMT1 Polyclonal Antibody at dilution of 1:300.



Immunohistochemistry analysis of paraffin-embedded human breast cancer using DNMT1 Polyclonal Antibody at dilution of 1:300.

Preparation & Storage

Storage Store at -20°C. Avoid freeze / thaw cycles.

Background

DNA (cytosine-5-)-methyltransferase 1 has a role in the establishment and regulation of tissue-specific patterns of methylated cytosine residues. Aberrant methylation patterns are associated with certain human tumors and developmental abnormalities. Two transcript variants encoding different isoforms have been found for this gene.

For Research Use Only

A Reliable Research Partner in Life Science and Medicine

Toll-free: 1-888-852-8623

Web: www.elabscience.com

Tel: 1-832-243-6086

Email: techsupport@elabscience.com

Fax: 1-832-243-6017