

CK-19 Polyclonal Antibody

Catalog Number: E-AB-70083

2 Publications



Note: Centrifuge before opening to ensure complete recovery of vial contents.

Description

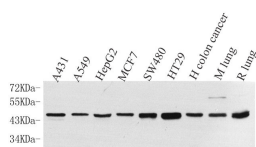
Reactivity	Human, Mouse, Rat
Immunogen	KLH conjugated Synthetic peptide corresponding to Mouse Cytokeratin 19
Host	Rabbit
Isotype	IgG
Purification	Affinity purification
Conjugation	Unconjugated
Formulation	PBS with 0.02% sodium azide, 1% protective protein and 50% glycerol, pH7.4

Applications

Recommended Dilution

WB	1:500-1:2000
IHC	1:200-1:800

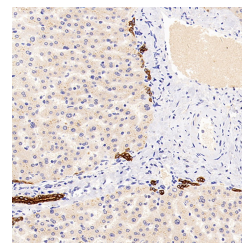
Data



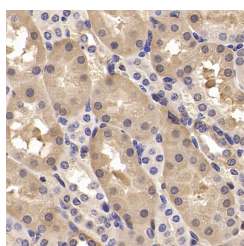
www.elabscience.com

Western Blot analysis of various samples using CK-19 Polyclonal Antibody at dilution of 1:1000.

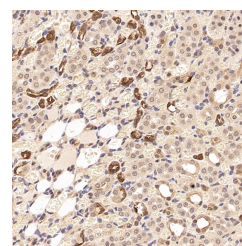
Observed Mw:44kDa
Calculated Mw:44kDa



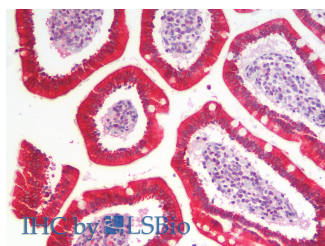
Immunohistochemistry analysis of paraffin-embedded human liver using CK-19 Polyclonal Antibody at dilution of 1:300.



Immunohistochemistry analysis of paraffin-embedded mouse kidney using CK-19 Polyclonal Antibody at dilution of 1:300.



Immunohistochemistry analysis of paraffin-embedded rat kidney using CK-19 Polyclonal Antibody at dilution of 1:300.



Immunohistochemistry analysis of paraffin-

For Research Use Only

A Reliable Research Partner in Life Science and Medicine

Toll-free: 1-888-852-8623

Web: www.elabscience.com

Tel: 1-832-243-6086

Email: techsupport@elabscience.com

Fax: 1-832-243-6017

CK-19 Polyclonal Antibody

Catalog Number: E-AB-70083 2 Publications



embedded Human Small Intestine using CK-19
Polyclonal Antibody (Elabscience® Product Detected
by Lifespan).

Preparation & Storage

Storage Store at -20°C. Avoid freeze / thaw cycles.

Background

The keratins are intermediate filament proteins responsible for the structural integrity of epithelial cells. KRT19, one of type I keratins, is specifically expressed in the periderm, the transiently superficial layer that envelops the developing epidermis. Due to its high sensitivity, KRT19 is the most used marker for detection of tumor cells disseminated in lymph nodes, peripheral blood, and bone marrow of breast cancer patients. This antibody, generated against full length KRT19 protein, also recognizes KRT17, another type I keratin homologous to KRT19. KRT17 is used as a marker for trauma.

For Research Use Only

A Reliable Research Partner in Life Science and Medicine

Toll-free: 1-888-852-8623

Web: www.elabscience.com

Tel: 1-832-243-6086

Email: techsupport@elabscience.com

Fax: 1-832-243-6017