

MTA3 Polyclonal Antibody

catalog number: E-AB-61279

Note: *Centrifuge before opening to ensure complete recovery of vial contents.*

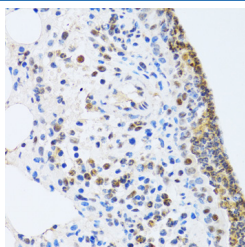
Description

Reactivity	Human;Mouse;Rat
Immunogen	Recombinant fusion protein of human MTA3 (NP_065795.1).
Host	Rabbit
Isotype	IgG
Purification	Affinity purification
Buffer	Phosphate buffered solution, pH 7.4, containing 0.05% stabilizer and 50% glycerol.

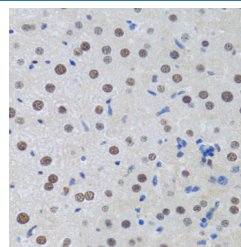
Applications Recommended Dilution

IHC	1:50-1:200
------------	------------

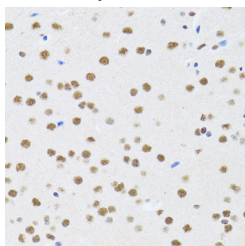
Data



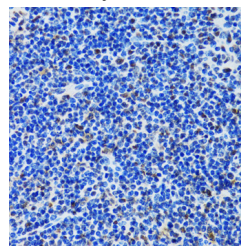
Immunohistochemistry of paraffin-embedded Rat lung using MTA3 Polyclonal Antibody at dilution of 1:100 (40x lens).



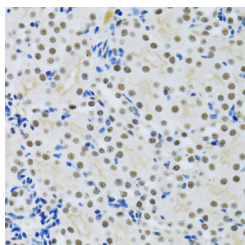
Immunohistochemistry of paraffin-embedded Rat liver using MTA3 Polyclonal Antibody at dilution of 1:100 (40x lens).



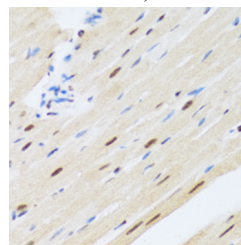
Immunohistochemistry of paraffin-embedded Rat brain using MTA3 Polyclonal Antibody at dilution of 1:100 (40x lens).



Immunohistochemistry of paraffin-embedded Rat spleen using MTA3 Polyclonal Antibody at dilution of 1:100 (40x lens).



Immunohistochemistry of paraffin-embedded Rat kidney using MTA3 Polyclonal Antibody at dilution of 1:100 (40x lens).



Immunohistochemistry of paraffin-embedded Rat heart using MTA3 Polyclonal Antibody at dilution of 1:100 (40x lens).

Preparation & Storage

Storage Store at -20°C Valid for 12 months. Avoid freeze / thaw cycles.

For Research Use Only

Toll-free: 1-888-852-8623
Web: www.elabscience.com

Tel: 1-832-243-6086
Email: techsupport@elabscience.com

Fax: 1-832-243-6017

Rev. V1.6

Shipping

The product is shipped with ice pack, upon receipt, store it immediately at the temperature recommended.

Background

MTA3 (Metastasis Associated 1 Family Member 3) is a Protein Coding gene. Diseases associated with MTA3 include Gastroesophageal Junction Adenocarcinoma and Vertebral, Cardiac, Renal, And Limb Defects Syndrome 1. Among its related pathways are Preimplantation Embryo and Chromatin organization. Gene Ontology (GO) annotations related to this gene include DNA-binding transcription factor activity and chromatin binding. An important paralog of this gene is MTA1.

For Research Use Only