

## Recombinant Human IL-20RA/IL-20R1 Protein (Fc Tag)

**Catalog Number:** PKSH032575

**Note:** Centrifuge before opening to ensure complete recovery of vial contents.

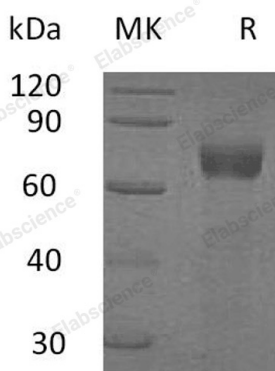
### Description

|                      |  |
|----------------------|--|
| <b>Species</b>       | Human  |
| <b>Source</b>        | HEK293 Cells-derived Human IL-20RA;IL-20R1 protein Val30-Lys250, with an C-terminal Fc |
| <b>Calculated MW</b> | 52.4 kDa   |
| <b>Observed MW</b>   | 70-85 kDa  |
| <b>Accession</b>     | Q9UHF4   |
| <b>Bio-activity</b>  | Not validated for activity   |

### Properties

|                       |  |
|-----------------------|--|
| <b>Purity</b>         | > 95 % as determined by reducing SDS-PAGE.   |
| <b>Endotoxin</b>      | < 1.0 EU per µg of the protein as determined by the LAL method.  |
| <b>Storage</b>        | Generally, lyophilized proteins are stable for up to 12 months when stored at -20 to -80°C. Reconstituted protein solution can be stored at 4-8°C for 2-7 days. Aliquots of reconstituted samples are stable at < -20°C for 3 months.            |
| <b>Shipping</b>       | This product is provided as lyophilized powder which is shipped with ice packs.  |
| <b>Formulation</b>    | Lyophilized from a 0.2 µm filtered solution of PBS, pH 7.4.<br>Normally 5% - 8% trehalose, mannitol and 0.01% Tween 80 are added as protectants before lyophilization.<br>Please refer to the specific buffer information in the printed manual. |
| <b>Reconstitution</b> | Please refer to the printed manual for detailed information.   |

### Data



> 95 % as determined by reducing SDS-PAGE.

### Background

Interleukin-20 Receptor Subunit  $\alpha$  (IL20RA) is a single-pass type I membrane protein that is a member of the type II cytokine receptor family. IL20RA is synthesized as a 553 amino acid glycoprotein precursor containing a 29 amino acid signal peptide; a 221 amino acid extracellular domain with two fibronectin type-III domains; a 24 amino acid transmembrane region; and a 279 amino acid intracellular domain. IL20RA is widely expressed with highest levels found in skin and testis and high levels in brain. IL20RA forms a heterodimer with IL20RB; and the complex serves as a receptor for IL19; IL20 and IL24. IL20RA also forms a heterodimer with the unique and specific receptor IL10RB and functions as the receptor for IL26.

### For Research Use Only

Toll-free: 1-888-852-8623  
Web: [www.elabscience.com](http://www.elabscience.com)

Tel: 1-832-243-6086  
Email: [techsupport@elabscience.com](mailto:techsupport@elabscience.com)

Fax: 1-832-243-6017