

Recombinant Human CDC2 Kinase/CDK1 Protein (GST Tag)

Catalog Number: PKSH031451

Note: Centrifuge before opening to ensure complete recovery of vial contents.

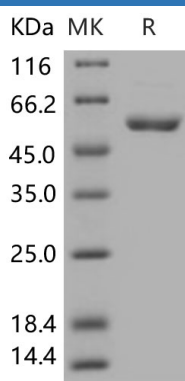
Description

Species	Human
Source	Baculovirus-Insect Cells-derived Human CDC2 Kinase/CDK1 protein Met 1-Met 297, with an N-terminal GST
Mol_Mass	60.0 kDa
Accession	NP_001777.1
Bio-activity	Not validated for activity

Properties

Purity	> 92 % as determined by reducing SDS-PAGE.
Endotoxin	< 1.0 EU per µg of the protein as determined by the LAL method.
Storage	Generally, lyophilized proteins are stable for up to 12 months when stored at -20 to -80 °C. Reconstituted protein solution can be stored at 4-8°C for 2-7 days. Aliquots of reconstituted samples are stable at < -20°C for 3 months.
Shipping	This product is provided as lyophilized powder which is shipped with ice packs.
Formulation	Lyophilized from sterile 50mM Tris, 100mM NaCl, 0.5mM PMSF, 0.5mM EDTA, 0.5mM GSH, pH 8.0 Normally 5% - 8% trehalose, mannitol and 0.01% Tween 80 are added as protectants before lyophilization. Please refer to the specific buffer information in the printed manual.
Reconstitution	Please refer to the printed manual for detailed information.

Data



> 92 % as determined by reducing SDS-PAGE.

Background

For Research Use Only

Toll-free: 1-888-852-8623
Web: www.elabscience.com

Tel: 1-832-243-6086
Email: techsupport@elabscience.com

Fax: 1-832-243-6017

CDC2, also known as CDK1, contains 1 protein kinase domain and belongs to the protein kinase superfamily, CMGC Ser/Thr protein kinase family, CDC2/CDKX subfamily. CDC2 is a catalytic subunit of the highly conserved protein kinase complex known as M-phase promoting factor (MPF), which is essential for G1/S and G2/M phase transitions of eukaryotic cell cycle. Mitotic cyclins stably associate with CDC2 and function as regulatory subunits. The kinase activity of CDK1 is controlled by cyclin accumulation and destruction through the cell cycle. The phosphorylation and dephosphorylation of CDC2 also play important regulatory roles in cell cycle control. It is required in higher cells for entry into S-phase and mitosis. CDC2 also is a cyclin-dependent kinase which displays CTD kinase activity and is required for RNA splicing. It has CTD kinase activity by hyperphosphorylating the C-terminal heptapeptide repeat domain (CTD) of the largest RNA polymerase II subunit RPB1, thereby acting as a key regulator of transcription elongation. CDK1 is required for RNA splicing, possibly by phosphorylating SRSF1/SF2. It is involved in regulation of MAP kinase activity, possibly leading to affect the response to estrogen inhibitors.

For Research Use Only

Toll-free: 1-888-852-8623
Web: www.elabscience.com

Tel: 1-832-243-6086
Email: techsupport@elabscience.com

Fax: 1-832-243-6017