

## Recombinant Mouse IL2Ra/CD25 Protein (Fc Tag)

**Catalog Number:** PKSM041228

**Note:** Centrifuge before opening to ensure complete recovery of vial contents.

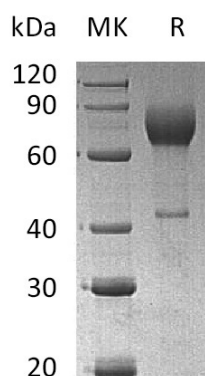
### Description

<b>Species</b>	Mouse
<b>Source</b>	HEK293 Cells-derived Mouse IL2Ra/CD25 protein Glu22-Lys236, with an C-terminal Fc
<b>Calculated MW</b>	51.6 kDa
<b>Observed MW</b>	60-90 kDa
<b>Accession</b>	P01590
<b>Bio-activity</b>	Not validated for activity

### Properties

<b>Purity</b>	> 95 % as determined by reducing SDS-PAGE.
<b>Endotoxin</b>	< 1.0 EU per µg of the protein as determined by the LAL method.
<b>Storage</b>	Generally, lyophilized proteins are stable for up to 12 months when stored at -20 to -80°C. Reconstituted protein solution can be stored at 4-8°C for 2-7 days. Aliquots of reconstituted samples are stable at < -20°C for 3 months.
<b>Shipping</b>	This product is provided as lyophilized powder which is shipped with ice packs.
<b>Formulation</b>	Lyophilized from a 0.2 µm filtered solution of PBS, pH 7.4. Normally 5% - 8% trehalose, mannitol and 0.01% Tween 80 are added as protectants before lyophilization.
	Please refer to the specific buffer information in the printed manual.
<b>Reconstitution</b>	Please refer to the printed manual for detailed information.

### Data



### Background

The interleukin 2 receptor alpha (IL2RA), also called CD25, is a type I transmembrane protein that presents on activated T cells, activated B cells, some thymocytes, myeloid precursors, and oligodendrocytes. IL2RA is a member of cytokine receptors family that utilizes the common gamma chain subunit ( $\gamma$ ). IL2RA is expressed in most B-cell neoplasms, some acute nonlymphocytic leukemias, neuroblastomas, and tumor infiltrating lymphocytes. IL2RA associates with IL2RB (CD122) to form a heterodimer that can act as a high-affinity receptor for IL-2.

### For Research Use Only

Toll-free: 1-888-852-8623  
Web: [www.elabscience.com](http://www.elabscience.com)

Tel: 1-832-243-6086  
Email: [techsupport@elabscience.com](mailto:techsupport@elabscience.com)

Fax: 1-832-243-6017