

Recombinant Human GH1/Growth hormone 1 Protein



Catalog Number:PKSH032513

Note: Centrifuge before opening to ensure complete recovery of vial contents.

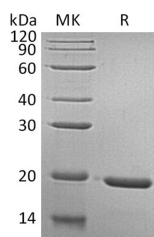
Description

Synonyms	GH;GH-N;GH1;GHB5;GHN;Growth hormone 1;hGH-N;IGHD1B
Species	Human
Expression Host	E.coli
Sequence	Phe27-Phe217
Accession	P01241
Calculated Molecular Weight	22.1 kDa
Observed molecular weight	20 kDa
Tag	None

Properties

Purity	> 95 % as determined by reducing SDS-PAGE.
Endotoxin	< 1.0 EU per µg of the protein as determined by the LAL method.
Storage	Generally, lyophilized proteins are stable for up to 12 months when stored at -20 to -80°C. Reconstituted protein solution can be stored at 4-8°C for 2-7 days. Aliquots of reconstituted samples are stable at < -20°C for 3 months.
Shipping	This product is provided as lyophilized powder which is shipped with ice packs.
Formulation	Lyophilized from a 0.2 µm filtered solution of 20mM Tris-HCl, 150mM NaCl, 5% Trehalose, 5% Mannitol, 0.02% Tween 80, pH8.0. Normally 5 % - 8 % trehalose, mannitol and 0.01 % Tween80 are added as protectants before lyophilization. Please refer to th
Reconstitution	Please refer to the printed manual for detailed information.

Data



> 95 % as determined by reducing SDS-PAGE.

Background

Growth hormone (GH); also known as somatotropin; is a member of a family of growth factors. It plays an important role in growth control. Its major role in stimulating body growth is to stimulate the liver and other tissues to secrete IGF-1. GH includes prolactin; placental lactogens; proliferins; and somatolactin. It is synthesized primarily by somatotropes in the anterior pituitary and is stored in secretory granules. It stimulates both the differentiation and proliferation of myoblasts. It also stimulates amino acid uptake and protein synthesis in muscle and other tissues.

For Research Use Only

A Reliable Research Partner in Life Science and Medicine

Toll-free: 1-888-852-8623

Web: www.elabscience.com

Tel: 1-832-243-6086

Email: techsupport@elabscience.com

Fax: 1-832-243-6017