

FITC Anti-Human CD20 Antibody[BCA/B20]

Catalog Number: E-AB-F1045C

Note: Centrifuge before opening to ensure complete recovery of vial contents.

Description

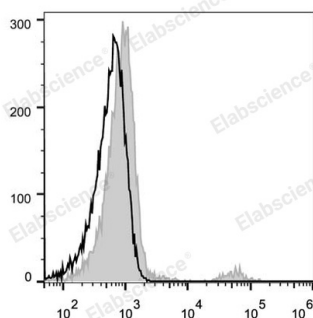
Reactivity	Human
Host	Mouse
Isotype	Mouse IgG2a, κ
Clone No.	BCA/B20
Isotype Control	FITC Mouse IgG2a, κ Isotype Control[C1.18.4] [Product E-AB-F09802C]
Conjugation	FITC
Conjugation Information	FITC is designed to be excited by the Blue laser (488 nm) and detected using an optical filter centered near 530 nm (e.g., a 525/40 nm bandpass filter).
Storage Buffer	Phosphate buffered solution, pH 7.2, containing 0.09% stabilizer.

Applications

Recommended usage

FCM	Each lot of this antibody is quality control tested by flow cytometric analysis. The amount of the reagent is suggested to be used 5 μL of antibody per test (million cells in 100 μL staining volume or per 100 μL of whole blood). Please check your vial before the experiment. Since applications vary, the appropriate dilutions must be determined for individual use.
------------	---

Data



Human peripheral blood lymphocytes are stained with FITC Anti-Human CD20 Antibody (filled gray histogram). Unstained lymphocytes (empty black histogram) are used as control.

Preparation & Storage

Storage	Keep as concentrated solution. This product can be stored at 2-8°C for 24 months. Please protected from prolonged exposure to light and do not freeze.
Shipping	Ice bag

Antigen Information

Alternate Names	B-lymphocyte antigen CD20;B-lymphocyte surface antigen B1;Bp35;CD20;Leukocyte surface antigen Leu-16;MS4A1;Membrane-spanning 4-domains subfamily A member 1
Uniprot ID	P11836
Gene ID	931

For Research Use Only

Background

CD20 is a 33-37 kD, four transmembrane spanning protein, also known as B1 and Bp35. CD20 is expressed on pre-B-cells, resting and activated B cells (not plasma cells), some follicular dendritic cells, and at low levels on a T cell subset. CD20 is heavily phosphorylated on activated B cells and malignant B cells. Homo-oligomeric complexes of CD20 are thought to form Ca²⁺ conductive ion channels in the plasma membrane of B cells. The CD20 molecule is involved in B-cell activation and is associated with various Src family kinases (Lyn, Lck, Fyn). It exists in a complex with MHC class I and II, CD53, CD81, and CD82.