

TCF25 Polyclonal Antibody

Catalog Number: E-AB-52659



Note: Centrifuge before opening to ensure complete recovery of vial contents.

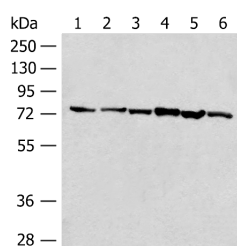
Description

Reactivity	Human, Mouse
Immunogen	Fusion protein of human TCF25
Host	Rabbit
Isotype	IgG
Purification	Antigen affinity purification
Conjugation	Unconjugated
Formulation	PBS with 0.05% NaN ₃ and 40% Glycerol, pH7.4

Applications Recommended Dilution

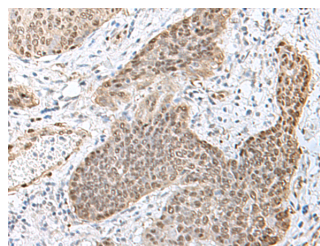
WB	1:500-1:2000
IHC	1:40-1:200
ELISA	1:5000-1:10000

Data

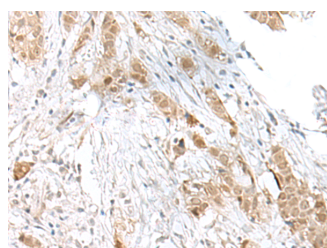


Western blot analysis of 293T cell K562 cell lysates using TCF25 Polyclonal Antibody at dilution of 1:250

Observed Mw: Refer to figures
Calculated Mw: 77 kDa



Immunohistochemistry of paraffin-embedded Human esophagus cancer tissue using TCF25 Polyclonal Antibody at dilution of 1:40 (×200)



Immunohistochemistry of paraffin-embedded Human breast cancer tissue using TCF25 Polyclonal Antibody at dilution of 1:40 (×200)

Preparation & Storage

Storage Store at -20°C. Avoid freeze / thaw cycles.

Background

For Research Use Only

A Reliable Research Partner in Life Science and Medicine

Toll-free: 1-888-852-8623

Web: www.elabscience.com

Tel: 1-832-243-6086

Email: techsupport@elabscience.com

Fax: 1-832-243-6017

TCF25 Polyclonal Antibody

Catalog Number: E-AB-52659



May play a role in cell death control. Acts as a transcriptional repressor. Has been shown to repress transcription of SRF in vitro and so may play a role in heart development.

For Research Use Only

A Reliable Research Partner in Life Science and Medicine

Toll-free: 1-888-852-8623

Tel: 1-832-243-6086

Fax: 1-832-243-6017

Web: www.elabscience.com

Email: techsupport@elabscience.com