

AF/LE Purified Anti-Human CD40 Antibody[G28.5]

catalog number: E-AB-F12140

Note: Centrifuge before opening to ensure complete recovery of vial contents.

Description

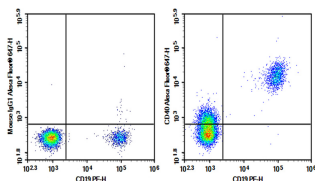
| | |
|---------------------|--|
| Reactivity | Human |
| Immunogen | Recombinant Human CD40 protein |
| Host | Mouse |
| Isotype | Mouse IgG1, κ |
| Clone | G28.5 |
| Purification | >98%, Protein A/G purified |
| Buffer | Sterile PBS, pH 7.2. < 1.0 EU per mg of the antibody as determined by the LAL method |

Applications

Recommended Dilution

| | |
|------------|---|
| FCM | 2 $\mu\text{g/mL}$ (1×10^5 - 5×10^5 cells) |
|------------|---|

Data



Human peripheral blood lymphocytes were stained with 0.2 μg AF/LE Purified Anti-Human CD40 Antibody[G28.5] (Right) and 0.2 μg Mouse IgG1, κ Isotype Control (Left), followed by Alexa Fluor® 647-conjugated Goat Anti-Mouse IgG Secondary Antibody, then anti-Human CD19 PE-conjugated Monoclonal Antibody.

Preparation & Storage

| | |
|-----------------|--|
| Storage | Store at 4°C valid for 12 months or -20°C valid for long term storage, avoid freeze / thaw cycles. This preparation contains no preservatives, thus it should be handled under aseptic conditions. |
| Shipping | Ice bag |

Background

CD40 is a 48 kD type I glycoprotein also known as BP50. It is a member of the TNFR superfamily primarily expressed on B cells, macrophages, follicular dendritic cells, endothelial cells, fibroblasts, and at low levels on plasma cells. CD40 has been reported to be involved in B cell differentiation, costimulation, isotype class-switching, and protection of B cells from apoptosis. Additionally, CD40 is important for T cell-B cell interactions. The ligand of CD40 is CD154 (CD40 ligand)

For Research Use Only