

BECN1 Monoclonal Antibody

catalog number: E-AB-22139

Note: Centrifuge before opening to ensure complete recovery of vial contents.

Description

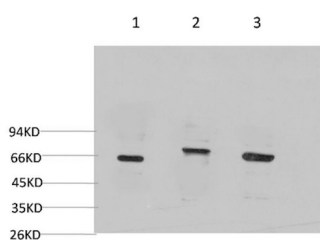
Reactivity	Human;Mouse;Rat
Immunogen	Synthetic Peptide of Beclin-1
Host	Mouse
Isotype	IgG
Clone	3C6
Purification	Protein A purification
Conjugation	Unconjugated
buffer	Phosphate buffered solution, pH 7.4, containing 0.05% stabilizer, 0.5% protein protectant and 50% glycerol.

Applications

Recommended Dilution

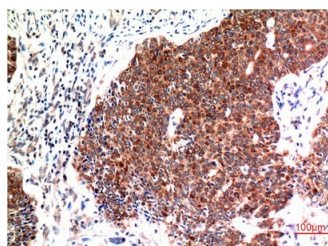
WB	1:1000-2000
IHC	1:100-200

Data

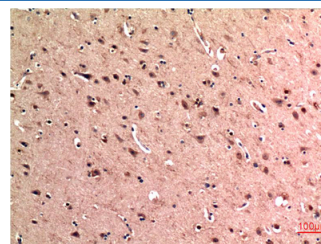


Western Blot analysis of 1) 293T, 2) C2C12, 3) Rat brain using BECN1 Monoclonal Antibody at dilution of 1:2000.

Observed-MV:60 kDa



Immunohistochemistry of paraffin-embedded Human breast carcinoma tissue using BECN1 Monoclonal Antibody at dilution of 1:200.



Immunohistochemistry of paraffin-embedded Human brain tissue using BECN1 Monoclonal Antibody at dilution of 1:200.

Preparation & Storage

Storage	Store at -20°C Valid for 12 months. Avoid freeze / thaw cycles.
Shipping	The product is shipped with ice pack, upon receipt, store it immediately at the temperature recommended.

Background

For Research Use Only

BECN1 Monoclonal Antibody

catalog number: E-AB-22139



Beclin-1 (BECN1), also known as ATG6 or VPS30, has a central role in autophagy, a process of programmed cell survival, which is increased during periods of cell stress and extinguished during the cell cycle. Beclin-1, may play a role in antiviral host defense. It protects against infection by a neurovirulent strain of Sindbis virus. Beclin-1 participates in the regulation of autophagy and has an important role in development, tumorigenesis, and neurodegeneration. A progressively reduced Beclin-1 expression is reported to correlate with the primary tumor growth of squamous cell carcinoma and adenocarcinoma of the lung. Caspase-mediated cleavage of Beclin 1 promotes crosstalk between apoptosis and autophagy.

For Research Use Only

A Reliable Research Partner in Life Science and Medicine
Tel: 400-999-2100

Email: techsupport@elabscience.cn

Web: www.elabscience.cn

Rev. V1.7