

Recombinant mtTFA Monoclonal Antibody

catalog number: **E-AB-81584**

Note: Centrifuge before opening to ensure complete recovery of vial contents.

Description

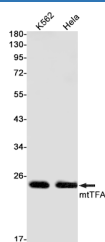
Reactivity	Human
Immunogen	A synthetic peptide of human mtTFA
Host	Rabbit
Isotype	IgG
Clone	R08-3E2
Purification	Affinity Purified
Buffer	50mM Tris-Glycine(pH 7.4), 0.15M NaCl, 40% Glycerol, 0.05% stabilizer and 0.05% protective protein.

Applications

Recommended Dilution

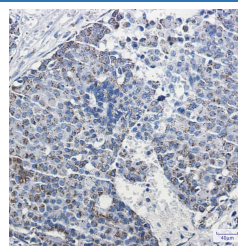
WB	1:1000-1:2000
IHC	1:50-1:100
IF	1:50-1:100

Data

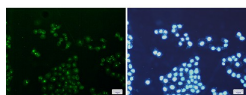


Western blot detection of mtTFA in K562, HeLa cell lysates using mtTFA Rabbit mAb (1:1000 diluted). Predicted band size: 29kDa. Observed band size: 24kDa.

Observed-MV: 24 kDa
Calculated-MV: 29 kDa



Immunohistochemistry of mtTFA in paraffin-embedded Human breast cancer tissue using mtTFA Rabbit mAb at dilution 1:100



Immunofluorescence of mtTFA/TFAM (green) in HeLa cells using mtTFA/TFAM Rabbit mAb at dilution 1:200, and DAPI (blue)

Preparation & Storage

Storage	Store at -20°C Valid for 12 months. Avoid freeze / thaw cycles.
Shipping	The product is shipped with ice pack, upon receipt, store it immediately at the temperature recommended.

Background

For Research Use Only

This gene encodes a key mitochondrial transcription factor containing two high mobility group motifs. The encoded protein also functions in mitochondrial DNA replication and repair. Sequence polymorphisms in this gene are associated with Alzheimer's and Parkinson's diseases. There are pseudogenes for this gene on chromosomes 6, 7, and 11.

Alternative splicing results in multiple transcript variants.

TFAM (Transcription Factor A, Mitochondrial) is a Protein Coding gene. Diseases associated with TFAM include Mitochondrial Dna Depletion Syndrome 15, Hepatocerebral Type and Skin Carcinoma In Situ. Among its related pathways are Mitochondrial Gene Expression and Respiratory electron transport, ATP synthesis by chemiosmotic coupling, and heat production by uncoupling proteins. GO annotations related to this gene include poly(A) RNA binding and chromatin binding.

For Research Use Only