

TPX2 Polyclonal Antibody

catalog number: E-AB-17129

Note: Centrifuge before opening to ensure complete recovery of vial contents.

Description

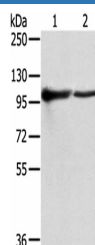
Reactivity	Human;Mouse
Immunogen	Fusion protein of human TPX2
Host	Rabbit
Isotype	IgG
Purification	Affinity purification
Conjugation	Unconjugated
buffer	Phosphate buffered solution, pH 7.4, containing 0.05% stabilizer and 50% glycerol.

Applications

Recommended Dilution

WB	1:500-2000
-----------	------------

Data



Western Blot analysis of K562 and A431 cells using TPX2

Polyclonal Antibody at dilution of 1/800

Calculated-MV:86 kDa

Preparation & Storage

Storage	Store at -20°C Valid for 12 months. Avoid freeze / thaw cycles.
Shipping	The product is shipped with ice pack, upon receipt, store it immediately at the temperature recommended.

Background

TPX2 (targeting protein for Xklp2) is a microtubule-associated protein involved in targeting the motor protein Xklp2 to microtubules. Ran-GTP activates TPX2 for the chromatin-induced microtubule assembly during M phase. Aurora-A kinase associates with TPX2 at the spindle apparatus and may regulate TPX2 via phosphorylation during the spindle assembly. TPX2 appears to play a structural role in spindle formation. TPX2 activates Eg2 in a microtubule-dependent manner by stimulating the phosphorylation and kinase activity of Eg2.

For Research Use Only