

APOBEC3D Polyclonal Antibody

catalog number: E-AB-12980

Note: Centrifuge before opening to ensure complete recovery of vial contents.

Description

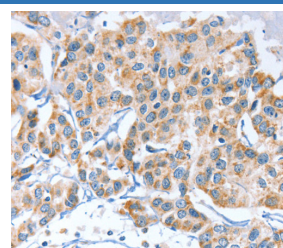
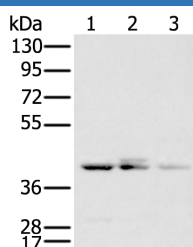
Reactivity	Human
Immunogen	Synthetic peptide of human APOBEC3D
Host	Rabbit
Isotype	IgG
Purification	Affinity purification
Conjugation	Unconjugated
buffer	Phosphate buffered solution, pH 7.4, containing 0.05% stabilizer and 50% glycerol.

Applications

Recommended Dilution

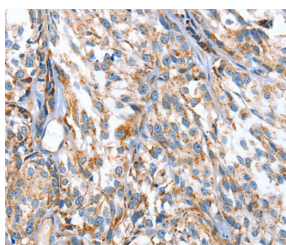
WB	1:500-1:2000
IHC	1:50-1:200

Data



Western Blot analysis of Mouse thymus tissue and A549 cell, Immunohistochemistry of paraffin-embedded Human breast Lovo and K562 cell using APOBEC3D Polyclonal Antibody at dilution of 1:580 cancer using APOBEC3D Polyclonal Antibody at dilution of 1:80

Calculated-MV:47 kDa



Immunohistochemistry of paraffin-embedded Human esophagus cancer using APOBEC3D Polyclonal Antibody at dilution of 1:80

Preparation & Storage

Storage	Store at -20°C Valid for 12 months. Avoid freeze / thaw cycles.
Shipping	The product is shipped with ice pack, upon receipt, store it immediately at the temperature recommended.

Background

This gene is a member of the cytidine deaminase gene family. It is one of a group of related genes found in a cluster, thought to result from gene duplication, on chromosome 22. Members of the cluster encode proteins that are structurally and functionally related to the C to U RNA-editing cytidine deaminase APOBEC1 and inhibit retroviruses, such as HIV, by deaminating cytosine residues in nascent retroviral cDNA.

For Research Use Only