

RMDN2 Polyclonal Antibody

catalog number: E-AB-52932

Note: Centrifuge before opening to ensure complete recovery of vial contents.

Description

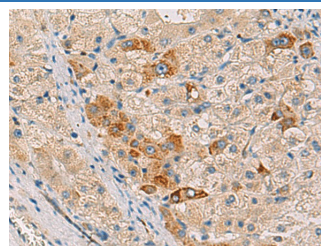
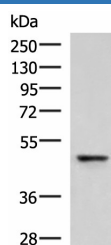
Reactivity	Human;Mouse;Rat
Immunogen	Fusion protein of human RMDN2
Host	Rabbit
Isotype	IgG
Purification	Antigen affinity purification
Conjugation	Unconjugated
buffer	Phosphate buffered solution, pH 7.4, containing 0.05% stabilizer and 50% glycerol.

Applications

Recommended Dilution

WB	1:500-1:2000
IHC	1:30-1:150

Data



Western blot analysis of Human fetal liver tissue lysate using RMDN2 Polyclonal Antibody at dilution of 1:750

Immunohistochemistry of paraffin-embedded Human liver cancer tissue using RMDN2 Polyclonal Antibody at dilution of 1:50($\times 200$)

Observed-MV: Refer to figures

Calculated-MV: 47 kDa

Preparation & Storage

Storage	Store at -20°C Valid for 12 months. Avoid freeze / thaw cycles.
Shipping	The product is shipped with ice pack, upon receipt, store it immediately at the temperature recommended.

Background

The human protein FAM82A1, also known as regulator of microtubule dynamics 2 (RMD2), was one of three proteins identified as related to a family of microtubule-associated proteins in *C. elegans*. FAM82A1 contains multiple coiled-coil domains and localizes to the spindle microtubules and spindle poles during cell division. During interphase, RMD2 localizes to the cytoplasm with protein observed in the microtubule lattice and perinuclear region.

For Research Use Only