

## Recombinant Human BDH1 Protein (His Tag)

Catalog Number: PKSH032366

**Note:** Centrifuge before opening to ensure complete recovery of vial contents.

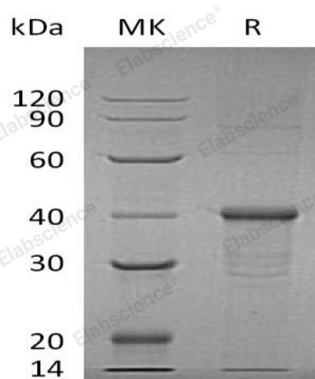
### Description

Species	Human
Mol_Mass	40.3 kDa
Accession	Q02338
Bio-activity	Not validated for activity

### Properties

Purity	> 95 % as determined by reducing SDS-PAGE.
Endotoxin	< 1.0 EU per µg of the protein as determined by the LAL method.
Storage	Store at < -20°C, stable for 6 months. Please minimize freeze-thaw cycles.
Shipping	This product is provided as liquid. It is shipped at frozen temperature with blue ice/gel packs. Upon receipt, store it immediately at < -20°C.
Formulation	Supplied as a 0.2 µm filtered solution of 50mM Tris-HCl, 1mM DTT, pH 7.5.
Reconstitution	Not Applicable

### Data



> 95 % as determined by reducing SDS-PAGE.

### Background

D-Beta-Hydroxybutyrate Dehydrogenase Mitochondrial (BDH) is a member of the short-chain dehydrogenases/reductases (SDR) family. BDH is localized in the mitochondrion matrix. BDH forms a homotetrameric lipid-requiring enzyme of the mitochondrial membrane and has a specific necessity for phosphatidylcholine for optimal enzymatic activity. BDH catalyzes the interconversion of acetoacetate and (R)-3-hydroxybutyrate, the 2 main ketone bodies formed during fatty acid catabolism.

### For Research Use Only