

Recombinant Human EphB1/EPHT2 Protein (aa 1-540, His Tag)



Catalog Number:PKSH030955

Note: Centrifuge before opening to ensure complete recovery of vial contents.

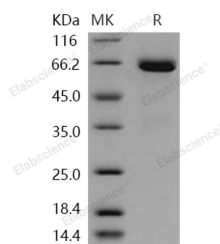
Description

Synonyms	Ephrin Type-A Receptor 7;EPH Homology Kinase 3;EHK-3;EPH-Like Kinase 11;EK11;hEK11;EPHA7;EHK3;HEK11
Species	Human
Expression Host	HEK293 Cells
Sequence	Met 1-Pro 540
Accession	P54762-1
Calculated Molecular Weight	60.0 kDa
Observed molecular weight	60 kDa
Tag	C-His
Bioactivity	Immobilized human EPHB1-His at 10 µg/ml (100 µl/well) can bind human EFNB1-Fc2h with a linear ranger of 3. 125-200 ng/mL. Immobilized human EPHB1-His at 10 µg/ml (100 µl/well) can bind human EFNB2-Fch with a linear ranger of 0.3125-20 ng/mL.

Properties

Purity	> 95 % as determined by reducing SDS-PAGE.
Endotoxin	< 1.0 EU per µg of the protein as determined by the LAL method.
Storage	Generally, lyophilized proteins are stable for up to 12 months when stored at -20 to -80°C. Reconstituted protein solution can be stored at 4-8°C for 2-7 days. Aliquots of reconstituted samples are stable at < -20°C for 3 months.
Shipping	This product is provided as lyophilized powder which is shipped with ice packs.
Formulation	Lyophilized from sterile PBS, pH 7.4, 5% glycerol Normally 5 % - 8 % trehalose, mannitol and 0.01% Tween80 are added as protectants before lyophilization. Please refer to the specific buffer information in the printed manual.
Reconstitution	Please refer to the printed manual for detailed information.

Data



> 95 % as determined by reducing SDS-PAGE.

Background

Ephrin type-B receptor 1, also known as EphB1, belongs to the ephrin receptor subfamily of the protein-tyrosine kinase family which 16 known receptors (14 found in mammals) are involved: EPHA1, EPHA2, EPHA3, EPHA4, EPHA5, EPHA6, EPHA7, EPHA8, EPHA9, EPHA10, EPHB1, EPHB2, EPHB3, EPHB4, EPHB5, EPHB6. EphB2 receptor

For Research Use Only

A Reliable Research Partner in Life Science and Medicine

Toll-free: 1-888-852-8623

Web: www.elabscience.com

Tel: 1-832-243-6086

Email: techsupport@elabscience.com

Fax: 1-832-243-6017

Recombinant Human EphB1/EPHT2 Protein (aa 1-540, His Tag)



Catalog Number:PKSH030955

tyrosine kinase phosphorylates syndecan-2 and that this phosphorylation event is crucial for syndecan-2 clustering and spine formation. The Eph family of receptor tyrosine kinases (comprising EphA and EphB receptors) has been implicated in synapse formation and the regulation of synaptic function and plasticity⁶. Ephrin receptors are components of cell signalling pathways involved in animal growth and development, forming the largest sub-family of receptor tyrosine kinases (RTKs). Ligand-mediated activation of Ephs induce various important downstream effects and Eph receptors have been studied for their potential roles in the development of cancer. EphB receptor tyrosine kinases are enriched at synapses, suggesting that these receptors play a role in synapse formation or function. We find that EphrinB binding to EphB induces a direct interaction of EphB with NMDA-type glutamate receptors. This interaction occurs at the cell surface and is mediated by the extracellular regions of the two receptors, but does not require the kinase activity of EphB.

For Research Use Only

A Reliable Research Partner in Life Science and Medicine

Toll-free: 1-888-852-8623

Web: www.elabscience.com

Tel: 1-832-243-6086

Email: techsupport@elabscience.com

Fax: 1-832-243-6017