

## Recombinant Human PD-L2/CD273 Protein (His Tag)

**Catalog Number:** PDMH100020

**Note:** Centrifuge before opening to ensure complete recovery of vial contents.

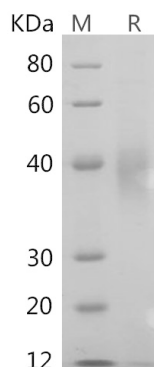
### Description

<b>Species</b>	Human
<b>Source</b>	Mammalian-derived Human PD-L2/CD273 protein Leu20-Pro219, with an C-terminal His
<b>Calculated MW</b>	23.6 kDa
<b>Observed MW</b>	34-50 kDa
<b>Accession</b>	Q9BQ51
<b>Bio-activity</b>	Not validated for activity

### Properties

<b>Purity</b>	> 95% as determined by reducing SDS-PAGE.
<b>Endotoxin</b>	< 1.0 EU/mg of the protein as determined by the LAL method
<b>Storage</b>	Generally, lyophilized proteins are stable for up to 12 months when stored at -20 to -80°C. Reconstituted protein solution can be stored at 4-8°C for 2-7 days. Aliquots of reconstituted samples are stable at < -20°C for 3 months.
<b>Shipping</b>	This product is provided as lyophilized powder which is shipped with ice packs.
<b>Formulation</b>	Lyophilized from a 0.2 µm filtered solution in PBS with 5% Trehalose and 5% Mannitol.
<b>Reconstitution</b>	It is recommended that sterile water be added to the vial to prepare a stock solution of 0.5 mg/mL. Concentration is measured by UV-Vis.

### Data



SDS-PAGE analysis of Human PD-L2/CD273 proteins, 2 µg/lane of Recombinant Human PD-L2/CD273 proteins was resolved with SDS-PAGE under reducing conditions, showing bands at 34-50 kDa.

### Background

Programmed Cell Death 1 Ligand 2 (PDCD1LG2) is a member of the BTN/MOG family. PDCD1LG2 contains one Ig-like C2-type domain and one Ig-like V-type domain. PDCD1LG2 is highly expressed in the heart, placenta, pancreas, lung and liver, it is weakly expressed in the spleen, lymph nodes, and thymus. PDCD1LG2 is involved in the costimulatory signal, essential for T-cell proliferation and IFNG production in a PDCD1-independent manner. PDCD1LG2 interaction with PDCD1 inhibits T-cell proliferation by blocking cell cycle progression and cytokine production.

### For Research Use Only

Toll-free: 1-888-852-8623  
Web: [www.elabscience.com](http://www.elabscience.com)

Tel: 1-832-243-6086  
Email: [techsupport@elabscience.com](mailto:techsupport@elabscience.com)

Fax: 1-832-243-6017