

## SLC25A23 Polyclonal Antibody

**catalog number: E-AB-66271**

**Note:** Centrifuge before opening to ensure complete recovery of vial contents.

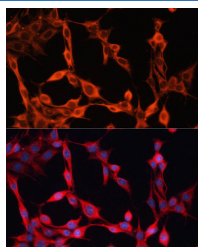
### Description

<b>Reactivity</b>	Human;Mouse;Rat
<b>Immunogen</b>	Recombinant fusion protein of human SLC25A23 (NP_077008.2).
<b>Host</b>	Rabbit
<b>Isotype</b>	IgG
<b>Purification</b>	Affinity purification
<b>Buffer</b>	Phosphate buffered solution, pH 7.4, containing 0.05% stabilizer and 50% glycerol.

### Applications

Applications	Recommended Dilution
IF	1:50-1:200

### Data



Immunofluorescence analysis of NIH/3T3 cells using SLC25A23 Polyclonal Antibody at dilution of 1:100. Blue: DAPI for nuclear staining.

### Preparation & Storage

<b>Storage</b>	Store at -20°C Valid for 12 months. Avoid freeze / thaw cycles.
<b>Shipping</b>	The product is shipped with ice pack, upon receipt, store it immediately at the temperature recommended.

### Background

SLC25A23 (Solute Carrier Family 25 Member 23) is a Protein Coding gene. Diseases associated with SLC25A23 include Sennetsu Fever. Gene Ontology (GO) annotations related to this gene include calcium ion binding. An important paralog of this gene is SLC25A25.

### For Research Use Only