

## AF/LE Purified Anti-Human HLA-DR Antibody[L243]

Catalog Number: GF11110

**Note:** Centrifuge before opening to ensure complete recovery of vial contents.

### Description

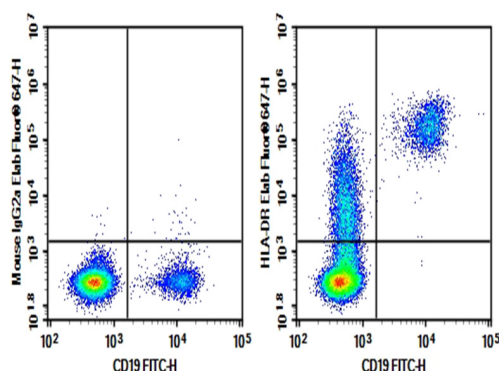
Reactivity	Human
Immunogen	Recombinant Human HLA-DR protein
Host	Mouse
Isotype	Mouse IgG2a, $\kappa$
Clone	L243
Purification	>98%, Protein A/G purified
Conjugation	None (AF/LE)
Buffer	Sterile PBS, pH 7.2. < 1.0 EU per mg of the antibody as determined by the LAL method.

### Applications

### Recommended Dilution

FCM	2 $\mu\text{g/mL}$ ( $0.5 \times 10^6$ - $1 \times 10^6$ cells)
-----	-----------------------------------------------------------------

### Data



Human peripheral blood lymphocytes were stained with 0.2  $\mu\text{g}$  AF/LE Purified Anti-Human HLA-DR Antibody[L243] (Right) and 0.2  $\mu\text{g}$  Mouse IgG2a,  $\kappa$  Isotype Control (Left), followed by Elab Fluor® 647-conjugated Goat Anti-Mouse IgG Secondary Antibody, then anti-Human CD19 FITC-conjugated Monoclonal Antibody.

### Preparation & Storage

Storage	Store at 4°C valid for 12 months or -20°C valid for long term storage, avoid freeze / thaw cycles. This preparation contains no preservatives, thus it should be handled under aseptic conditions.
Shipping	Ice bag

### Background

HLA-DR is a heterodimeric cell surface glycoprotein comprised of a 36 kD  $\alpha$  (heavy) chain and a 27 kD  $\beta$  (light) chain. It is expressed on B cells, activated T cells, monocytes/macrophages, dendritic cells, and other non-professional APCs. In conjunction with the CD3/TCR complex and CD4 molecules, HLA-DR is critical for efficient peptide presentation to CD4+ T cells.