

## P2RX2 Polyclonal Antibody

catalog number: E-AB-13479

**Note:** Centrifuge before opening to ensure complete recovery of vial contents.

### Description

|                     |  |
|---------------------|--|
| <b>Reactivity</b>   | Human;Mouse  |
| <b>Immunogen</b>    | Synthetic peptide of human P2RX2   |
| <b>Host</b>         | Rabbit   |
| <b>Isotype</b>      | IgG  |
| <b>Purification</b> | Affinity purification  |
| <b>Conjugation</b>  | Unconjugated   |
| <b>Buffer</b>       | Phosphate buffered solution, pH 7.4, containing 0.05% stabilizer and 50% glycerol. |

### Applications

### Recommended Dilution

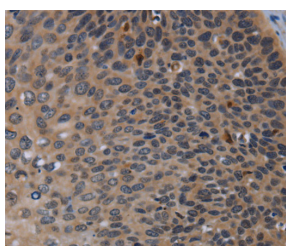
|            |              |
|------------|--------------|
| <b>WB</b>  | 1:500-1:2000 |
| <b>IHC</b> | 1:50-1:200   |

### Data

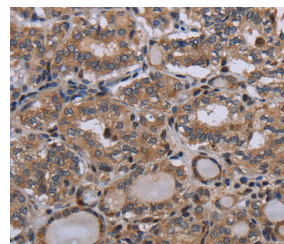


Western Blot analysis of Mouse brain tissue using P2RX2 Polyclonal Antibody at dilution of 1:300

**Calculated-MV:52 kDa**



Immunohistochemistry of paraffin-embedded Human cervical cancer using P2RX2 Polyclonal Antibody at dilution of 1:50



Immunohistochemistry of paraffin-embedded Human thyroid cancer using P2RX2 Polyclonal Antibody at dilution of 1:50

### Preparation & Storage

|                 |  |
|-----------------|--|
| <b>Storage</b>  | Store at -20°C Valid for 12 months. Avoid freeze / thaw cycles.  |
| <b>Shipping</b> | The product is shipped with ice pack, upon receipt, store it immediately at the temperature recommended. |

### Background

The product of this gene belongs to the family of purinoceptors for ATP. This receptor functions as a ligand-gated ion channel. Binding to ATP mediates synaptic transmission between neurons and from neurons to smooth muscle. Multiple transcript variants encoding distinct isoforms have been identified for this gene.

### For Research Use Only