

## Elab Fluor® 647 Anti-Mouse CD150/SLAM Antibody[TC15-12F12.2]

Catalog Number: E-AB-F1177M

**Note:** Centrifuge before opening to ensure complete recovery of vial contents.

### Description

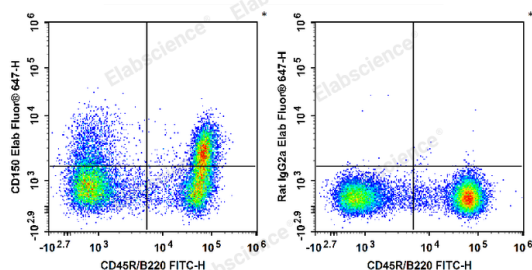
<b>Reactivity</b>	Mouse
<b>Host</b>	Rat
<b>Isotype</b>	Rat IgG2a, $\lambda$
<b>Clone No.</b>	TC15-12F12.2
<b>Isotype Control</b>	Elab Fluor® 647 Rat IgG2a, $\lambda$ Isotype Control[B39-4] [Product E-AB-F09742M]
<b>Conjugation</b>	Elab Fluor® 647
<b>Conjugation Information</b>	Elab Fluor® 647 is designed to be excited by the Red laser (627-640 nm) and detected using an optical filter centered near 670 nm (e.g., a 660/20 nm bandpass filter).
<b>Storage Buffer</b>	Phosphate buffered solution, pH 7.2, containing 0.09% stabilizer.

### Applications

### Recommended usage

**FCM** Each lot of this antibody is quality control tested by flow cytometric analysis. **The amount of the reagent is suggested to be used 5  $\mu$ L of antibody per test (million cells in 100  $\mu$ L staining volume or per 100  $\mu$ L of whole blood).** Please check your vial before the experiment. Since applications vary, the appropriate dilutions must be determined for individual use.

### Data



C57BL/6 murine splenocytes are stained with FITC Anti-Mouse CD45R/B220 Antibody and Elab Fluor® 647 Anti-Mouse CD150 Antibody (Left). Splenocytes are stained with FITC Anti-Mouse CD45R/B220 Antibody and Elab Fluor® 647 Rat IgG2a,  $\lambda$  Isotype Control (Right).

### Preparation & Storage

<b>Storage</b>	Keep as concentrated solution. This product can be stored at 2-8°C for 24 months. Please protected from prolonged exposure to light and do not freeze.
<b>Shipping</b>	Ice bag

### Antigen Information

<b>Alternate Names</b>	CD 150;Signaling lymphocytic activation molecule;Slam;Slamf1
<b>Uniprot ID</b>	Q9QUM4
<b>Gene ID</b>	27218

### For Research Use Only

## Background

CD150 is a 75-95 kD member of the immunoglobulin superfamily, also known as SLAM (signaling lymphocyte activation molecule) or IPO-3. CD150, a single chain type I transmembrane molecule, is expressed on thymocytes, T cell subsets, B cells, dendritic cells, and endothelial cells. The expression is upregulated upon activation. CD150 expression has been shown to be maintained on Th1 but not Th2 clones. T regulatory cells express a relatively high level of CD150. Antibodies against CD150 have been shown to augment IFN- $\gamma$  production by Th1 cells, especially when co-stimulated through the TCR. CD150 associates with the src homology 2-domain-containing protein tyrosine phosphatase SHP-2, and this association is thought to be involved in signal transduction. In combination with CD48, CD150 is a useful marker for hematopoietic stem cell studies.