

ADGRF5 Polyclonal Antibody

catalog number: E-AB-18017

Note: Centrifuge before opening to ensure complete recovery of vial contents.

Description

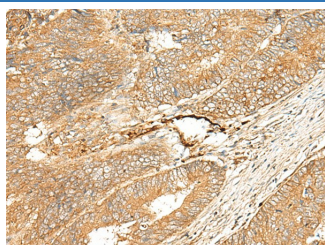
| | |
|---------------------|--|
| Reactivity | Human |
| Immunogen | Synthetic peptide of human ADGRF5 |
| Host | Rabbit |
| Isotype | IgG |
| Purification | Antigen affinity purification |
| Conjugation | Unconjugated |
| buffer | Phosphate buffered solution, pH 7.4, containing 0.05% stabilizer and 50% glycerol. |

Applications

Recommended Dilution

| | |
|------------|------------|
| IHC | 1:40-1:200 |
|------------|------------|

Data



Immunohistochemistry of paraffin-embedded Human colorectal cancer tissue using ADGRF5 Polyclonal Antibody at dilution of 1:40($\times 200$)

Preparation & Storage

| | |
|-----------------|--|
| Storage | Store at -20°C Valid for 12 months. Avoid freeze / thaw cycles. |
| Shipping | The product is shipped with ice pack, upon receipt, store it immediately at the temperature recommended. |

Background

ADGRF5 (Adhesion G Protein-Coupled Receptor F5) is a Protein Coding gene. Among its related pathways are Surfactant metabolism and Metabolism of proteins. Gene Ontology (GO) annotations related to this gene include G-protein coupled receptor activity and transmembrane signaling receptor activity. An important paralog of this gene is ADGRF1.

For Research Use Only