

# GUK1 Polyclonal Antibody

Catalog Number: E-AB-16473

**Note:** Centrifuge before opening to ensure complete recovery of vial contents.

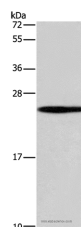
## Description

<b>Reactivity</b>	Human, Mouse
<b>Immunogen</b>	Synthetic peptide of human GUK1
<b>Host</b>	Rabbit
<b>Isotype</b>	IgG
<b>Purification</b>	Affinity purification
<b>Conjugation</b>	Unconjugated
<b>Formulation</b>	PBS with 0.05% sodium azide and 50% glycerol, PH7.4

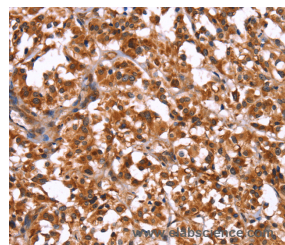
## Applications Recommended Dilution

<b>WB</b>	1:200-1:1000
<b>IHC</b>	1:100-1:200

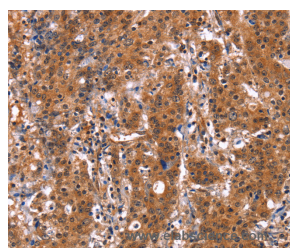
## Data



Western Blot analysis of 231 cell using GUK1 Polyclonal Antibody at dilution of 1:400  
**Calculated Mw:22kDa**



Immunohistochemistry of paraffin-embedded Human thyroid cancer using GUK1 Polyclonal Antibody at dilution of 1:50



Immunohistochemistry of paraffin-embedded Human gastric cancer using GUK1 Polyclonal Antibody at dilution of 1:50

## Preparation & Storage

**Storage** Store at -20°C. Avoid freeze / thaw cycles.

## Background

The protein encoded by this gene is an enzyme that catalyzes the transfer of a phosphate group from ATP to guanosine monophosphate (GMP) to form guanosine diphosphate (GDP). The encoded protein is thought to be a good target for cancer chemotherapy. Several transcript variants encoding different isoforms have been found for this gene.

## For Research Use Only

A Reliable Research Partner in Life Science and Medicine

Toll-free: 1-888-852-8623

Web: [www.elabscience.com](http://www.elabscience.com)

Tel: 1-832-243-6086

Email: [techsupport@elabscience.com](mailto:techsupport@elabscience.com)

Fax: 1-832-243-6017