

ST14 Polyclonal Antibody

catalog number: D-AB-10208L

Note: Centrifuge before opening to ensure complete recovery of vial contents.

Description

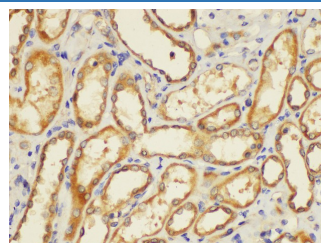
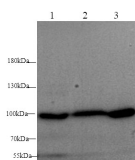
Reactivity	Mouse;Rat
Immunogen	Recombinant Human ST14 protein expressed by E.coli
Host	Rabbit
Isotype	IgG
Purification	Antigen Affinity Purification
Conjugation	Unconjugated
buffer	PBS with 0.05% proclin 300, 1% protective protein and 50% glycerol,pH7.4

Applications

Recommended Dilution

WB	1:500-1000
-----------	------------

Data



Western blot with ST14 Polyclonal antibody at dilution of 1:1000.lane 1:Mouse Kidney,lane 2:Mouse breast,lane 3: Rat Kidney

Immunohistochemistry of paraffin-embedded Human kidney using ST14 Polyclonal Antibody at dilution of 1:200.

Observed-MV:95-105kDa

Calculated-MV:95 kDa

Preparation & Storage

Storage	Store at -20°C Valid for 12 months. Avoid freeze / thaw cycles.
Shipping	The product is shipped with ice pack,upon receipt,store it immediately at the temperature recommended.

Background

The protein encoded by this gene is an epithelial-derived, integral membrane serine protease. This protease forms a complex with the Kunitz-type serine protease inhibitor, HAI-1, and is found to be activated by sphingosine 1-phosphate. This protease has been shown to cleave and activate hepatocyte growth factor/scattering factor, and urokinase plasminogen activator, which suggest the function of this protease as an epithelial membrane activator for other proteases and latent growth factors.

For Research Use Only