

STAT3 Polyclonal Antibody

catalog number: **E-AB-32982**

Note: Centrifuge before opening to ensure complete recovery of vial contents.

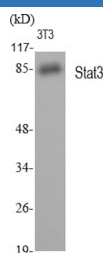
Description

Reactivity	Human;Mouse;Rat
Immunogen	Synthesized peptide derived from human Stat3 around the non-phosphorylation site of Ser727.
Host	Rabbit
Isotype	IgG
Purification	Affinity purification
Buffer	Phosphate buffered solution, pH 7.4, containing 0.05% stabilizer, 0.5% protein protectant and 50% glycerol.

Applications

Applications	Recommended Dilution
WB	1:500-1:2000
IHC	1:100-1:300
IF	1:200-1:1000

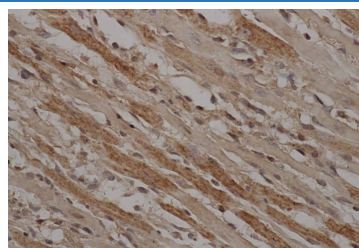
Data



Western Blot analysis of 3T3 cells using Stat3 Polyclonal Antibody at dilution of 1:2000.

Observed-MW:88 kDa

Calculated-MW:88 kDa



Immunohistochemistry of paraffin-embedded Mouse heart using Stat3 antibody at dilution of 1:50

Preparation & Storage

Storage	Store at -20°C Valid for 12 months. Avoid freeze / thaw cycles.
Shipping	The product is shipped with ice pack, upon receipt, store it immediately at the temperature recommended.

Background

Transcription factor that binds to the interleukin-6 (IL-6)-responsive elements identified in the promoters of various acute-phase protein genes. Activated by IL31 through IL31RA.

For Research Use Only