

OVAL Polyclonal Antibody

catalog number: E-AB-11387

Note: Centrifuge before opening to ensure complete recovery of vial contents.

Description

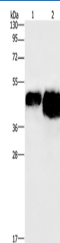
Reactivity	Chicken
Immunogen	Recombinant protein of Chicken OVAL
Host	Rabbit
Isotype	IgG
Purification	Affinity purification
Conjugation	Unconjugated
Buffer	Phosphate buffered solution, pH 7.4, containing 0.05% stabilizer and 50% glycerol.

Applications

Recommended Dilution

WB	1:500-1:2000
-----------	--------------

Data



Western Blot analysis of 0.4ug and 0.8ug OVAL protein
using OVAL Polyclonal Antibody at dilution of 1:500

Calculated-MW:43 kDa

Preparation & Storage

Storage	Store at -20°C Valid for 12 months. Avoid freeze / thaw cycles.
Shipping	The product is shipped with ice pack, upon receipt, store it immediately at the temperature recommended.

Background

Ovalbumin (abbreviated OVA) is the main protein found in egg white, making up 60-65% of the total protein. Ovalbumin displays sequence and three-dimensional homology to the serpin superfamily, but unlike most serpins it is not a serine protease inhibitor. It is presumed to be a storage protein.