

Recombinant Human Insulin Protein

Catalog Number:PKSH032458



Note: Centrifuge before opening to ensure complete recovery of vial contents.

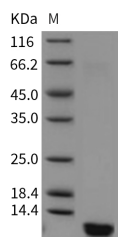
Description

Synonyms	IDDM;IDDM1;IDDM2;ILPR;INS;IRDN;MODY10
Species	Human
Expression Host	Yeast
Sequence	Phe1-Lys29&Gly1-Asn21
Accession	P01308
Calculated Molecular Weight	6.0 kDa
Observed molecular weight	6 kDa
Tag	None
Bioactivity	Measured in a serum-free cell proliferation assay using MCF-7 human breast cancer cells. The ED50 for this effect is typically 0.2-1 µg/mL.

Properties

Purity	> 95 % as determined by reducing SDS-PAGE.
Endotoxin	Please contact us for more information.
Storage	Generally, lyophilized proteins are stable for up to 12 months when stored at -20 to -80°C. Reconstituted protein solution can be stored at 4-8°C for 2-7 days. Aliquots of reconstituted samples are stable at < -20°C for 3 months.
Shipping	This product is provided as lyophilized powder which is shipped with ice packs.
Formulation	Lyophilized from sterile PBS, pH 7.4. Normally 5 % - 8 % trehalose, mannitol and 0.01% Tween80 are added as protectants before lyophilization. Please refer to the specific buffer information in the printed manual.
Reconstitution	Please refer to the printed manual for detailed information.

Data



> 95 % as determined by reducing SDS-PAGE.

Background

After removal of the precursor signal peptide, proinsulin is post-translationally cleaved into three peptides: the B chain and A chain peptides, which are covalently linked via two disulfide bonds to form insulin, and C-peptide. Binding of insulin to the insulin receptor (INSR) stimulates glucose uptake.

For Research Use Only

A Reliable Research Partner in Life Science and Medicine

Toll-free: 1-888-852-8623

Web: www.elabscience.com

Tel: 1-832-243-6086

Email: techsupport@elabscience.com

Fax: 1-832-243-6017