

AGPAT6 Polyclonal Antibody

Catalog Number: E-AB-13764



Note: Centrifuge before opening to ensure complete recovery of vial contents.

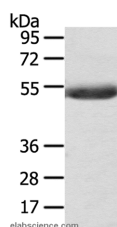
Description

Reactivity	Human, Mouse
Immunogen	Synthetic peptide of human AGPAT6
Host	Rabbit
Isotype	IgG
Purification	Affinity purification
Conjugation	Unconjugated
Formulation	PBS with 0.05% sodium azide and 50% glycerol, PH7.4

Applications Recommended Dilution

WB	1:200-1:1000
-----------	--------------

Data



Western Blot analysis of Mouse serum using AGPAT6 Polyclonal Antibody at dilution of 1:400
Calculated Mw:52kDa

Preparation & Storage

Storage Store at -20°C. Avoid freeze / thaw cycles.

Background

Lysophosphatidic acid acyltransferases (EC 2.3.1.51) catalyze the conversion of lysophosphatidic acid (LPA) to phosphatidic acid (PA). LPA and PA are involved in signal transduction and lipid biosynthesis.

For Research Use Only

A Reliable Research Partner in Life Science and Medicine

Toll-free: 1-888-852-8623

Web: www.elabscience.com

Tel: 1-832-243-6086

Email: techsupport@elabscience.com

Fax: 1-832-243-6017