

## Recombinant Rat CD80/B7-1 protein (His Tag)

Catalog Number: PDER100212

**Note:** Centrifuge before opening to ensure complete recovery of vial contents.

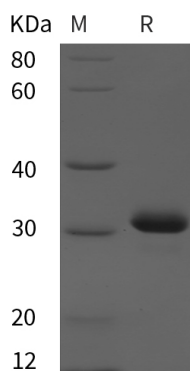
### Description

<b>Species</b>	Rat
<b>Source</b>	E.coli-derived Rat CD80 protein Gly41-Ala262, with an N-terminal His
<b>Calculated MW</b>	24.3 kDa
<b>Observed MW</b>	32 kDa
<b>Accession</b>	G3V671
<b>Bio-activity</b>	Not validated for activity

### Properties

<b>Purity</b>	> 95% as determined by reducing SDS-PAGE.
<b>Endotoxin</b>	< 10 EU/mg of the protein as determined by the LAL method
<b>Storage</b>	Generally, lyophilized proteins are stable for up to 12 months when stored at -20 to -80 °C. Reconstituted protein solution can be stored at 4-8°C for 2-7 days. Aliquots of reconstituted samples are stable at < -20°C for 3 months.
<b>Shipping</b>	This product is provided as lyophilized powder which is shipped with ice packs.
<b>Formulation</b>	Lyophilized from a 0.2 µm filtered solution in PBS with 5% Trehalose and 5% Mannitol.
<b>Reconstitution</b>	It is recommended that sterile water be added to the vial to prepare a stock solution of 0.5 mg/mL. Concentration is measured by UV-Vis.

### Data



> 95 % as determined by reducing SDS-PAGE.

### Background

The B-lymphocyte activation antigen B7-1 (referred to as B7), also known as CD80, is a member of cell surface immunoglobulin superfamily and is expressed on the surface of antigen-presenting cells including activated B cells, macrophages and dendritic cells. As costimulatory ligands, B7-1 which exists predominantly as dimer and the related protein B7-2, interact with the costimulatory receptors CD28 and cytotoxic T lymphocyte-associated antigen 4 (CTLA-4) expressed on T cells, and thus constitute one of the dominant pathways that regulate T cell activation and tolerance, cytokine production, and the generation of CTL. The B7/CD28/CTLA4 pathway has the ability to both positively and negatively regulate immune responses. CD80 is thus regarded as promising therapeutic targets for autoimmune diseases and various carcinomas.

### For Research Use Only