

Recombinant Human LDHB Protein (His Tag)

Catalog Number: PDEH100952

Note: Centrifuge before opening to ensure complete recovery of vial contents.

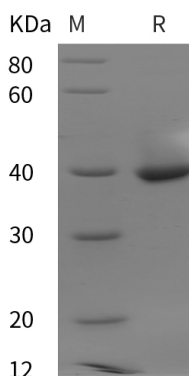
Description

Species	Human
Source	E.coli-derived Human LDHB protein Ala2-Leu334, with an N-terminal His
Calculated MW	36.5 kDa
Observed MW	40 kDa
Accession	P07195
Bio-activity	Not validated for activity

Properties

Purity	> 95% as determined by reducing SDS-PAGE.
Endotoxin	< 10 EU/mg of the protein as determined by the LAL method
Storage	Generally, lyophilized proteins are stable for up to 12 months when stored at -20 to -80°C. Reconstituted protein solution can be stored at 4-8°C for 2-7 days. Aliquots of reconstituted samples are stable at < -20°C for 3 months.
Shipping	This product is provided as lyophilized powder which is shipped with ice packs.
Formulation	Lyophilized from a 0.2 µm filtered solution in PBS with 5% Trehalose and 5% Mannitol.
Reconstitution	It is recommended that sterile water be added to the vial to prepare a stock solution of 0.5 mg/mL. Concentration is measured by UV-Vis.

Data



SDS-PAGE analysis of Human LDHB proteins, 2 µg/lane of Recombinant Human LDHB proteins was resolved with SDS-PAGE under reducing conditions, showing bands at 40 kDa.

Background

L-Lactate Dehydrogenase B Chain (LDH-B) is a member of the lactate dehydrogenase family that consists of three members, LDH-A, LDH-B and LDH-C, members of this family function as powerful markers for germ cell tumors. LDH-B is an oxidoreductase that catalyzes the interconversion of pyruvate and lactate with concomitant interconversion of NADH and NAD⁺. It converts pyruvate to lactate when oxygen is absent or in short supply and it performs the reverse reaction during the Cori cycle in the liver. It is also called Hydroxybutyrate Dehydrogenase (HBD) due to its ability to catalyze the oxidation of hydroxybutyrate.

For Research Use Only

Toll-free: 1-888-852-8623
Web: www.elabscience.com

Tel: 1-832-243-6086
Email: techsupport@elabscience.com

Fax: 1-832-243-6017