

PE/Elab Fluor® 594 Anti-Mouse CD3 Antibody[17A2]

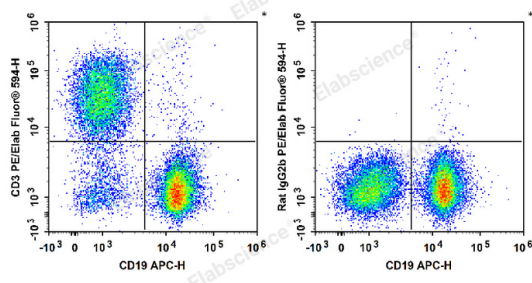
Catalog Number: E-AB-F1013P

Note: Centrifuge before opening to ensure complete recovery of vial contents.

| Description | |
|-------------------------|---|
| Reactivity | Mouse |
| Host | Rat |
| Isotype | Rat IgG2b, κ |
| Clone No. | 17A2 |
| Isotype Control | PE/Elab Fluor® 594 Rat IgG2b, κ Isotype Control[LTF-2] [Product E-AB-F09842P] |
| Conjugation | PE/Elab Fluor® 594 |
| Conjugation Information | PE/Elab Fluor® 594 is designed to be excited by the blue (488 nm), Green (532 nm) and yellow-green (561 nm) lasers and detected using an optical filter centered near 620 nm (e.g., a 610/20 nm bandpass filter). |
| Storage Buffer | Phosphate buffered solution, pH 7.2, containing 0.09% sodium azide and 1% BSA. |

| Applications | Recommended usage |
|--------------|---|
| FCM | Each lot of this antibody is quality control tested by flow cytometric analysis. The amount of the reagent is suggested to be used 5 μL of antibody per test (million cells in 100 μL staining volume or per 100 μL of whole blood). Please check your vial before the experiment. Since applications vary, the appropriate dilutions must be determined for individual use. |

Data



C57BL/6 murine splenocytes are stained with APC Anti-

Mouse CD19 Antibody and PE/Elab Fluor® 594 Anti-Mouse CD3 Antibody (Left). Splenocytes are stained with APC Anti-

Mouse CD19 Antibody and PE/Elab Fluor® 594 Rat IgG2b, κ Isotype Control (Right).

| Preparation & Storage | |
|-----------------------|---|
| Storage | Keep as concentrated solution. This product can be stored at 2-8°C for 12 months. Please protected from prolonged exposure to light and do not freeze. |
| Shipping | Ice bag |

| Antigen Information | |
|---------------------|--|
| Alternate Names | CD3;CD3E/D/G/Z;CD3e/d/g/z;T-cell surface glycoprotein CD 3epsilon/delta/gamma/zeta chain |

For Research Use Only

Tel: 400-999-2100

Web: www.elabscience.cn

Email: techsupport@elabscience.cn

Rev. V1.7

Uniprot ID

P04235;P11942;P22646;P24161

Gene ID

12502

Background

CD3, also known as T3, is a member of the Ig superfamily and primarily expressed on T cells, NK-T cells, and at different levels on thymocytes during T cell differentiation. CD3 is composed of CD3 ϵ , δ , γ and ζ chains. It forms a TCR complex by associating with TCR α/β or γ/δ chains. CD3 plays a critical role in TCR signal transduction, T cell activation, and antigen recognition by binding the peptide/MHC antigen complex.