

Recombinant Human KLF6 Protein

Catalog Number:PKSH032677



Note: Centrifuge before opening to ensure complete recovery of vial contents.

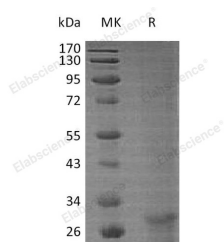
Description

Synonyms	Krueppel-Like Factor 6;B-Cell-Derived Protein 1;Core Promoter Element-Binding Protein;GC-Rich Sites-Binding Factor GBF;Proto-Oncogene BCD1;Suppressor of Tumorigenicity 12 Protein;Transcription Factor Zf9;KLF6;BCD1;COPEB;CPBP;ST12
Species	Human
Expression Host	E.coli
Sequence	Met 1-Ser109
Accession	Q99612-3
Calculated Molecular Weight	12.6 kDa
Observed molecular weight	13-19 kDa
Tag	None

Properties

Purity	> 95 % as determined by reducing SDS-PAGE.
Endotoxin	< 1.0 EU per µg of the protein as determined by the LAL method.
Storage	Generally, lyophilized proteins are stable for up to 12 months when stored at -20 to -80°C. Reconstituted protein solution can be stored at 4-8°C for 2-7 days. Aliquots of reconstituted samples are stable at < -20°C for 3 months.
Shipping	This product is provided as lyophilized powder which is shipped with ice packs.
Formulation	Lyophilized from a 0.2 µm filtered solution of PBS, pH 7.4. Normally 5 % - 8 % trehalose, mannitol and 0.01% Tween80 are added as protectants before lyophilization. Please refer to the specific buffer information in the printed manual.
Reconstitution	Please refer to the printed manual for detailed information.

Data



> 95 % as determined by reducing SDS-PAGE.

Background

Krueppel-Like Factor 6 (KLF6) belongs to the krueppel C2H2-type zinc-finger protein family. KLF6 contains three C2H2-type zinc fingers and localizes in the nucleus. KLF6 expression is highest in the placenta followed by spleen, thymus, prostate, testis, small intestine and colon. However, it is weakly expressed in the pancreas, lung, liver, heart, and skeletal muscle. KLF6 functions as a transcriptional activator and could play a role in B-cell growth and development. Defects in KLF6 will result in gastric cancer and prostate cancer.

For Research Use Only

A Reliable Research Partner in Life Science and Medicine

Toll-free: 1-888-852-8623

Web: www.elabscience.com

Tel: 1-832-243-6086

Email: techsupport@elabscience.com

Fax: 1-832-243-6017