

METAP1D Polyclonal Antibody

catalog number: E-AB-52286

Note: Centrifuge before opening to ensure complete recovery of vial contents.

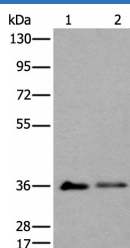
Description

Reactivity	Human;Mouse
Immunogen	Fusion protein of human METAP1D
Host	Rabbit
Isotype	IgG
Purification	Antigen affinity purification
Conjugation	Unconjugated
buffer	Phosphate buffered solution, pH 7.4, containing 0.05% stabilizer and 50% glycerol.

Applications

WB	1:500-1:2000
IHC	1:40-1:200

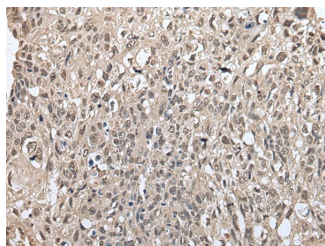
Data



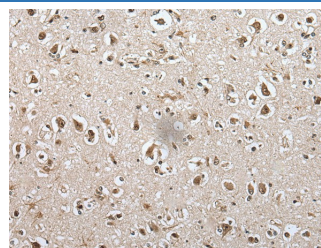
Western blot analysis of 293T cell lysates using METAP1D Polyclonal Antibody at dilution of 1:600

Observed-MV:Refer to figures

Calculated-MV:37 kDa



Immunohistochemistry of paraffin-embedded Human lung cancer tissue using METAP1D Polyclonal Antibody at dilution of 1:60(×200)



Immunohistochemistry of paraffin-embedded Human brain tissue using METAP1D Polyclonal Antibody at dilution of 1:60(×200)

Preparation & Storage

Storage	Store at -20°C Valid for 12 months. Avoid freeze / thaw cycles.
Shipping	The product is shipped with ice pack, upon receipt, store it immediately at the temperature recommended.

Background

The N-terminal methionine excision pathway is an essential process in which the N-terminal methionine is removed from many proteins, thus facilitating subsequent protein modification. In mitochondria, enzymes that catalyze this reaction are called methionine aminopeptidases (MetAps, or MAPs; EC 3.4.11.18) (Serero et al., 2003 [PubMed 14532271])

For Research Use Only