

Phospho-Catenin beta (Ser37) Polyclonal Antibody

Catalog Number: E-AB-20828

1 Publications



Note: Centrifuge before opening to ensure complete recovery of vial contents.

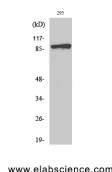
Description

Reactivity	Human, Mouse, Rat
Immunogen	Synthesized peptide derived from human Catenin- β around the phosphorylation site of Ser37
Host	Rabbit
Isotype	IgG
Purification	Affinity purification
Conjugation	Unconjugated
Formulation	PBS with 0.02% sodium azide, 0.5% protective protein and 50% glycerol, pH7.4

Applications Recommended Dilution

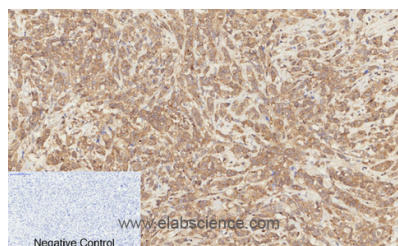
WB	1:500-1:2000
IHC	1:100-1:300
IF	1:200-1:1000
ELISA	1:40000

Data

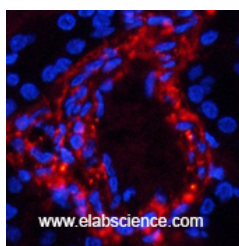


Western Blot analysis of 293T cells using Phospho-Catenin beta (Ser37) Polyclonal Antibody at dilution of 1:2000

Observed Mw:85kDa
Calculated Mw:85kDa



Immunohistochemistry of paraffin-embedded Human breast cancer tissue using Phospho-Catenin beta (Ser37) Polyclonal Antibody at dilution of 1:200



Immunofluorescence analysis of Human kidney tissue using Phospho-Catenin beta (Ser37) Polyclonal Antibody at dilution of 1:200

Preparation & Storage

Storage Store at -20°C . Avoid freeze / thaw cycles.

For Research Use Only

A Reliable Research Partner in Life Science and Medicine

Toll-free: 1-888-852-8623

Tel: 1-832-243-6086

Fax: 1-832-243-6017

Web: www.elabscience.com

Email: techsupport@elabscience.com

Phospho-Catenin beta (Ser37) Polyclonal Antibody

Catalog Number: E-AB-20828

1 Publications



Background

Key downstream component of the canonical Wnt signaling pathway. In the absence of Wnt, forms a complex with AXIN1, AXIN2, APC, CSNK1A1 and GSK3B that promotes phosphorylation on N-terminal Ser and Thr residues and ubiquitination of CTNNB1 via BTRC and its subsequent degradation by the proteasome. In the presence of Wnt ligand, CTNNB1 is not ubiquitinated and accumulates in the nucleus, where it acts as a coactivator for transcription factors of the TCF/LEF family, leading to activate Wnt responsive genes. Involved in the regulation of cell adhesion. The majority of beta-catenin is localized to the cell membrane and is part of E-cadherin/catenin adhesion complexes which are proposed to couple cadherins to the actin cytoskeleton.

For Research Use Only

A Reliable Research Partner in Life Science and Medicine

Toll-free: 1-888-852-8623

Tel: 1-832-243-6086

Fax: 1-832-243-6017

Web: www.elabscience.com

Email: techsupport@elabscience.com