

Recombinant Human SULT1B1 Protein (His Tag)

Catalog Number:PKSH031074



Note: Centrifuge before opening to ensure complete recovery of vial contents.

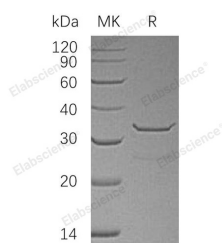
Description

| | |
|------------------------------------|--|
| Synonyms | Sulfotransferase Family Cytosolic 1B Member 1;ST1B1;Sulfotransferase 1B1;Sulfotransferase 1B2;ST1B2;Thyroid Hormone Sulfotransferase;SULT1B1;ST1B2;SULT1B2 |
| Species | Human |
| Expression Host | E.coli |
| Sequence | Leu 2-Ile 296 |
| Accession | NP_055280.2 |
| Calculated Molecular Weight | 35.7 kDa |
| Observed molecular weight | 34 kDa |
| Tag | N-His |
| Bioactivity | Measured by its ability to transfer sulfate from PAPS to 1-Naphthol. The specific activity is > 40 pmoles/min/μg. |

Properties

| | |
|-----------------------|--|
| Purity | > 95 % as determined by reducing SDS-PAGE. |
| Endotoxin | Please contact us for more information. |
| Storage | Generally, lyophilized proteins are stable for up to 12 months when stored at -20 to -80°C. Reconstituted protein solution can be stored at 4-8°C for 2-7 days. Aliquots of reconstituted samples are stable at < -20°C for 3 months. |
| Shipping | This product is provided as lyophilized powder which is shipped with ice packs. |
| Formulation | Lyophilized from sterile 20mM Tris, 0.1 M NaCl, 10% glycerol, 1mM DTT, pH 8.0 Normally 5 % - 8 % trehalose, mannitol and 0.01 % Tween80 are added as protectants before lyophilization. Please refer to the specific buffer information in the printed m |
| Reconstitution | Please refer to the printed manual for detailed information. |

Data



> 95 % as determined by reducing SDS-PAGE.

Background

Sulfotransferase family cytosolic 1B member 1; also known as Sulfotransferase 1B1; Sulfotransferase 1B2; Thyroid hormone sulfotransferase; SULT1B1 and ST1B2; is a cytoplasm protein which belongs to the sulfotransferase 1 family. Sulfotransferase enzymes catalyze the sulfate conjugation of many hormones; neurotransmitters; drugs; and xenobiotic compounds. These cytosolic enzymes are different in their tissue distributions and substrate specificities. SULT1B1 is

For Research Use Only

A Reliable Research Partner in Life Science and Medicine

Toll-free: 1-888-852-8623

Web: www.elabscience.com

Tel: 1-832-243-6086

Email: techsupport@elabscience.com

Fax: 1-832-243-6017

Recombinant Human SULT1B1 Protein (His Tag)

Catalog Number:PKSH031074



highly expressed in the liver; peripheral blood leukocytes; colon (mucosal lining); small intestine (jejunum) and spleen. A lesser expression of SULT1B1 was observed in the lung; placenta and thymus. SULT1B1 catalyzes the sulfate conjugation of many hormones; neurotransmitters; drugs and xenobiotic compounds. Sulfonation increases the water solubility of most compounds; and therefore their renal excretion; but it can also result in bioactivation to form active metabolites. SULT1B1 sulfates dopamine; small phenols such as 1-naphthol and p-nitrophenol and thyroid hormones; including 3,3'-diiodothyronine; triiodothyronine; reverse triiodothyronine and thyroxine.

For Research Use Only

A Reliable Research Partner in Life Science and Medicine

Toll-free: 1-888-852-8623

Web: www.elabscience.com

Tel: 1-832-243-6086

Email: techsupport@elabscience.com

Fax: 1-832-243-6017