

CFHR2 Polyclonal Antibody

catalog number: E-AB-52540

Note: Centrifuge before opening to ensure complete recovery of vial contents.

Description

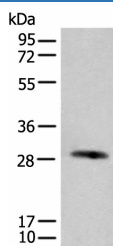
Reactivity	Human
Immunogen	Fusion protein of human CFHR2
Host	Rabbit
Isotype	IgG
Purification	Antigen affinity purification
Conjugation	Unconjugated
Buffer	Phosphate buffered solution, pH 7.4, containing 0.05% stabilizer and 50% glycerol.

Applications

Recommended Dilution

WB	1:500-1:2000
IHC	1:30-1:150

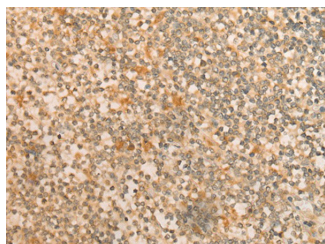
Data



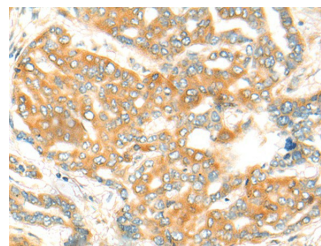
Western blot analysis of Human urinary bladder tissue lysate using CFHR2 Polyclonal Antibody at dilution of 1:550

Observed-MW:Refer to figures

Calculated-MW:31 kDa



Immunohistochemistry of paraffin-embedded Human tonsil tissue using CFHR2 Polyclonal Antibody at dilution of 1:35(×200)



Immunohistochemistry of paraffin-embedded Human liver cancer tissue using CFHR2 Polyclonal Antibody at dilution of 1:35(×200)

Preparation & Storage

Storage	Store at -20°C Valid for 12 months. Avoid freeze / thaw cycles.
Shipping	The product is shipped with ice pack, upon receipt, store it immediately at the temperature recommended.

Background

For Research Use Only

This gene belongs to a family of complement factor H-related genes (CFHR), which are clustered together with complement factor H gene on chromosome 1, and are involved in regulation of complement. Mutations in CFHR genes have been associated with dense deposit disease and atypical haemolytic-uraemic syndrome. Alternatively spliced transcript variants have been found for this gene.