

CALM3 Polyclonal Antibody

catalog number: **E-AB-65026**

Note: Centrifuge before opening to ensure complete recovery of vial contents.

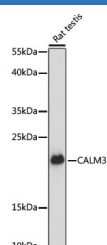
Description

| | |
|---------------------|--|
| Reactivity | Human;Mouse;Rat |
| Immunogen | A synthetic peptide of human CALM3 (NP_005175.2). |
| Host | Rabbit |
| Isotype | IgG |
| Purification | Affinity purification |
| Buffer | Phosphate buffered solution, pH 7.4, containing 0.05% stabilizer and 50% glycerol. |

Applications

| Applications | Recommended Dilution |
|--------------|----------------------|
| WB | 1:500-1:2000 |

Data



Western blot analysis of extracts of Rat testis using CALM3
Polyclonal Antibody at dilution of 1:3000.

Observed-MW:17 kDa

Calculated-MW:16 kDa

Preparation & Storage

| | |
|-----------------|--|
| Storage | Store at -20°C Valid for 12 months. Avoid freeze / thaw cycles. |
| Shipping | The product is shipped with ice pack, upon receipt, store it immediately at the temperature recommended. |

Background

CALM3 (Calmodulin 3) is a Protein Coding gene. Diseases associated with CALM3 include Long Qt Syndrome 16 and Long Qt Syndrome 1. Among its related pathways are DAG and IP3 signaling and Transport of glucose and other sugars, bile salts and organic acids, metal ions and amine compounds. Gene Ontology (GO) annotations related to this gene include calcium ion binding and protein domain specific binding. An important paralog of this gene is CALM2.

For Research Use Only